

PRICE LIST
OUR KNOWLEDGE SETS US APART

ITEM / SERIES	MATERIAL OF CONSTRUCTION	PAGE	ITEM / SERIES	MATERIAL OF CONSTRUCTION	PAGE
N.P.T., SOCKET WELD AND SWEAT END Y-STRAINERS			SILENT FLANGED CHECK VALVES		
Y250TIT	.Cast Iron	1	SC125 Series	.Cast Iron	16
Y125 Series	.Bronze	1	SC150 Series	.WCB / CF8M	16
Y250TBT	.Bronze	1	SC300 Series	.WCB / CF8M	17
Y300 Series	.WCB / CF8M	1	SOFT SEATS FOR SILENT CHECK VALVES		
Y600 Series	.WCB	1	Soft Seat Adder	.Viton	17
Y600 Series	.CF8M / Alloy 20	2	FOOT VALVES		
Y1500 Series	.WCB / CF8M	2-3	FV125FIBB	.Cast Iron	17
Y1500 Series	.WC6	3	FV150 Series	.WCB / CF8M	17-18
FLANGED, BUTTWELD AND RTJ Y-STRAINERS			RESILIENT SEATED BUTTERFLY VALVES BI125W/L		
Y125FIB	.Cast Iron	3	BI125W Series	.Ductile Iron	18
Y250FDIB	.Ductile Iron (A395)	3	BI125L Series	.Ductile Iron	18-19
Y150FBB	.Bronze	4	Operator Options	.All Sizes	19-20
Y150 Series	.WCB	4	HIGH PERFORMANCE BUTTERFLY VALVES		
Y150 Series	.CF8M	4	HB150W/L Series	.WCB / CF8M	20
Y300 Series	.WCB	4	HB300W/L Series	.WCB / CF8M	20-21
Y300 Series	.CF8M	5	HB600W/L Series	.WCB / CF8M	21-22
Y600 Series	.WCB / CF8M	5	Operator Options	.All Sizes	22
Y900 Series	.WCB / CF8M	5-6	Replacement Parts	.All Sizes	22
Y1500 Series	.WCB / CF8M	6-7	FLANGED TRIPLE DUTY VALVES		
Y-Strainer Machining Options		7	TD125FIDE	.Cast Iron	22
Y-Strainer Spare Screen Options 304 SS / 316 SS		7	N.P.T. AND FLANGED DRIP PAN ELBOWS		
N.P.T. AND SOCKET WELD BASKET STRAINERS			D125PE	.Cast Iron	22
B125TIR2	.Cast Iron	7	AIR VENTS		
B300 Series	.WCB / CF8M	8	AR150	.Cast Iron	23
FLANGED BASKET STRAINERS			NEOPRENE CONNECTORS		
B125 Series	.Cast Iron	8-9	CTNT (AUM)	.Neoprene	23
B150FBB1	.Bronze (B62)	9	CFNS (ASM)	.Neoprene	23
B150 Series	.WCB / CF8M	9-10	CFNT (ATM)	.Neoprene	23
FLANGED DUAL BASKET ASSEMBLY STRAINERS			UNIBODY THREADED END BALL VALVES		
DB125 Series	.Cast Iron	10	1RB20TCSCO	.WCB	23
FLANGED SUCTION DIFFUSERS			1RB20TSSCO	.CF8M	23
SC125 Series	.Cast Iron	10	TWO PIECE THREADED END BALL VALVES		
Basket, Dual Basket & Suction Diffuser Spare Screens.		11	2FB6 Series	.Brass	24
PERFORATED CONE & BASKET STRAINERS			2FB10TSSRL	.CF8M	24
TC Series		11	2SB900 Series	.WCB / CF8M	24
TB Series		12	THREE PIECE THREADED END BALL VALVES		
DUAL DISC CHECK VALVES			3FB10TSSRL/3FB10SWSSRL	.CF8M	24
DC125 Series	.Cast Iron	12	3SB20TCSCCL/3SB20SWCSCL	.WCB	24
DR150 Series	.WCB / CF8M	12-13	3SB20TSSRL/3SB20SWSSRL	.CF8M	25
DR300 Series	.WCB / CF8M	13-14	SPLIT BODY FLANGED BALL VALVES		
DR600 Series	.WCB / CF8M	14-15	2FB150 Series	.WCB / CF8M	25
Inconel X750 Valve Springs		15	2FB300 Series	.WCB / CF8M	25
SILENT THREADED (N.P.T.) CHECK VALVES			TERMS AND CONDITIONS		
SC600TSSSSM	.CF8M	15	.26		
SILENT WAFER CHECK VALVES					
SC125 Series	.Cast Iron	15-16			
SC150 Series	.WCB / CF8M	16			

NOTES: The material in this price list is for general information. For specific performance data and proper material selection, consult factory or your IFC representative. Although every attempt has been made to ensure that the information contained in this catalogue is correct, IFC Inc. reserves the right to change designs, materials and/or specifications without notice.

Toll Free: 1.866.872.0072 • Toll Free Fax: 1.866.872.0073

Local Calls: 905.335.8777 • Local Fax: 905.335.0977 • Email: ifc@islipflowcontrols.com • www.islipflowcontrols.com

N.P.T., Socket Weld and Sweat End Y-Strainers

Y250TIT Screen: Sizes 1/4" to 2" have mesh only screen. Above 2", screen is perforated plate

ITEM #: Y250TIT										
M.A.W.P.:	400 psig at 150 F			End Connection:	N.P.T.		Drain Connection:	N.P.T.		
Body Material:	Cast Iron			Screen:	304 SS		Gasket:	Non-Asbestos		
Size:	1/4"	3/8"	1/2"	3/4"	1"	1-1/4"	1-1/2"	2"	2-1/2"	3"
Item Price:	11.40	11.40	11.40	17.60	21.95	33.10	44.55	73.65	154.00	178.00
Spare Gasket Price:	9.00	9.00	9.00	13.00	16.00	20.50	30.00	36.00	42.00	42.00
Std. Screen Size:	0.032"	0.032"	0.032"	0.032"	0.032"	0.032"	0.032"	0.032"	0.045"	0.045"
Item Weight - Lbs.:	2	2	2	3	3	6	8	13	22	30

Y125TBT/SBT Screen: Sizes 1/4" to 2" have mesh only screen. Above 2", screen is perforated plate

ITEM #: Y125TBT / Y125SBT										
M.A.W.P.:	200 psig at 150 F			End Connection:	N.P.T. / Sweat		Drain Connection:	N.P.T.		
Body Material:	Bronze (B62)			Screen:	304 SS		Gasket:	Non-Asbestos		
Size:	1/4"	3/8"	1/2"	3/4"	1"	1-1/4"	1-1/2"	2"	2-1/2"	3"
Item Price:	30.00	30.00	30.00	42.00	65.00	96.00	130.00	200.00	330.00	485.00
Spare Gasket Price:	9.00	9.00	9.00	13.00	16.00	20.50	30.00	36.00	42.00	42.00
Std. Screen Size:	0.032"	0.032"	0.032"	0.032"	0.032"	0.032"	0.032"	0.032"	0.045"	0.045"
Item Weight - Lbs.:	1	1	1	1	2	2	3	4	11	16

Y250TBT Screen: Sizes 1/4" to 2" have mesh only screen. Above 2", screen is perforated plate

ITEM #: Y250TBT										
M.A.W.P.:	400 psig at 150 F			End Connection:	N.P.T. / B.S.P.T.		Drain Connection:	N.P.T.		
Body Material:	Bronze (B62)			Screen:	304 SS		Gasket:	Silicon		
Size:	1/2"	3/4"	1"	1 1/4"	1 1/2"	2"	2 1/2"	3"		
Item Price:	36.00	53.00	85.00	115.00	180.00	295.00	510.00	685.00		
Spare Gasket Price:	3.00	3.00	4.00	6.00	6.00	8.00	8.00	12.00		
Std. Screen Size:	0.032"	0.032"	0.032"	0.032"	0.032"	0.032"	0.045"	0.045"		
Item Weight - Lbs.:	1.00	2	2	3	4	8	10	13		

ITEM #: Y300TST / Y300SWST										
M.A.W.P.:	740 psig at 100 F			End Connection:	N.P.T. / Socket Weld		Drain Connection:	N.P.T.		
Body Material:	Carbon Steel (WCB)			Screen:	304 SS		Gasket:	Teflon		
Size:	1/4"	3/8"	1/2"	3/4"	1"	1-1/4"	1-1/2"	2"	2-1/2"	3"
Item Price:	56.00	56.00	56.00	67.00	96.00	130.00	152.00	257.00	530.00	795.00
Spare Gasket Price:	6.00	6.00	6.00	8.00	8.00	10.00	10.00	12.00	16.00	16.00
Std. Screen Size:	0.032"	0.032"	0.032"	0.032"	0.032"	0.032"	0.032"	0.032"	0.045"	0.045"
Item Weight - Lbs.:	1	1	1	1	2	2	3	5	6	8

ITEM #: Y300TSST / Y300SWSST										
M.A.W.P.:	720 psig at 100 F			End Connection:	N.P.T. / Socket Weld		Drain Connection:	N.P.T.		
Body Material:	316 SS (CF8M)			Screen:	304 SS		Gasket:	Teflon		
Size:	1/4"	3/8"	1/2"	3/4"	1"	1-1/4"	1-1/2"	2"	2-1/2"	3"
Item Price:	115.00	115.00	115.00	135.00	212.00	277.00	312.00	535.00	1060.00	1590.00
Spare Gasket Price:	6.00	6.00	6.00	8.00	8.00	10.00	10.00	12.00	16.00	16.00
Std. Screen Size:	0.032"	0.032"	0.032"	0.032"	0.032"	0.032"	0.032"	0.032"	0.045"	0.045"
Item Weight - Lbs.:	1	1	1	1	2	2	3	5	6	8

ITEM #: Y600TST / Y600SWST / Y600TSB / Y600SWSB										
M.A.W.P.:	1480 psig at 100 F			End Connection:	N.P.T. / Socket Weld		Drain Connection:	N.P.T.		
Body Material:	Carbon Steel (WCB)			Screen:	304 SS		Gasket:	304 SS Sp Wound		
Size:	1/2"	3/4"	1"	1 1/4"	1 1/2"	2"	2 1/2"	3"		
Item Price:	62.00	74.00	110.00	147.00	196.00	281.00	1516.00	1735.00		
Spare Gasket Price:	15.00	17.00	21.00	22.00	25.00	28.00	35.00	40.00		
Std. Screen Size:	0.032"	0.032"	0.032"	0.032"	0.032"	0.032"	0.045"	0.045"		
Item Weight - Lbs.:	2	3	5	7	10	15	63	77		

ITEM #: Y600TSST / Y600SWSST / Y600TSSB / Y600SWSSB										
M.A.W.P.:	1440 psig at 100 F			End Connection:		N.P.T. / Socket Weld		Drain Connection:		N.P.T.
Body Material:	316 SS (CF8M)			Screen:		304 SS		Gasket:		304 SS Sp Wound
Size:	1/2"	3/4"	1"	1-1/4"	1-1/2"	2"	2-1/2"	3"		
Item Price:	125.00	161.00	286.00	472.00	562.00	806.00	3765.00	4335.00		
Spare Gasket Price:	15.00	17.00	21.00	22.00	25.00	28.00	35.00	40.00		
Std. Screen Size:	0.032"	0.032"	0.032"	0.032"	0.032"	0.032"	0.045"	0.045"		
Item Weight - Lbs.:	2	3	5	7	10	15	63	77		

ITEM #: Y600TLCCT / Y600SWLCCT										
M.A.W.P.:	1440 psig at 100 F			End Connection:		N.P.T. / Socket Weld		Drain Connection:		N.P.T.
Body Material:	Low Temp C.S.			Screen:		304 SS		Gasket:		304 SS Sp Wound
Size:	1/2"	3/4"	1"	1-1/4"	1-1/2"	2"				
Item Price:	130.00	147.00	255.00	P.O.A.	480.00	685.00				
Spare Gasket Price:	15.00	17.00	21.00		25.00	28.00				
Std. Screen Size:	0.032"	0.032"	0.032"	0.032"	0.032"	0.032"				
Item Weight - Lbs.:	2	3	5	8	10	15				

ITEM #: Y600TA20T / Y600SWA20T										
M.A.W.P.:	1200 psig at 100 F			End Connection:		N.P.T. / Socket Weld		Drain Connection:		N.P.T.
Body Material:	Alloy 20 (CN7M)			Screen:		Alloy 20 (CN7M)		Gasket:		Alloy 20 Sp Wound
Size:	1/2"	3/4"	1"	1-1/4"	1-1/2"	2"				
Item Price:	334.00	423.00	645.00	P.O.A.	1230.00	1820.00				
Spare Gasket Price:	242.00	290.00	290.00		343.00	396.00				
Std. Screen Size:	0.032"	0.032"	0.032"	0.032"	0.032"	0.032"				
Item Weight - Lbs.:	2	3	5	8	10	15				

ITEM #: Y1500TST / Y1500SWST										
M.A.W.P.:	3705 psig at 100 F			End Connection:		N.P.T. / Socket Weld		Drain Connection:		N.P.T.
Body Material:	Carbon Steel (WCB)			Screen:		304 SS		Gasket:		304 SS Sp. Wound
Size:	1/2"	3/4"	1"							
Item Price:	113.00	179.00	310.00							
Spare Gasket Price:	18.00	21.00	24.00							
Std. Screen Size:	0.032"	0.032"	0.032"							
Item Weight - Lbs.:	3	5	7							

ITEM #: Y1500TSST / Y1500SWSST										
M.A.W.P.:	3600 psig at 100 F			End Connection:		N.P.T. / Socket Weld		Drain Connection:		N.P.T.
Body Material:	316 SS (CF8M)			Screen:		304 SS		Gasket:		304 SS Sp. Wound
Size:	1/2"	3/4"	1"							
Item Price:	259.00	353.00	640.00							
Spare Gasket Price:	18.00	21.00	24.00							
Std. Screen Size:	0.032"	0.032"	0.032"							
Item Weight - Lbs.:	3	5	7							

ITEM #: Y1500TSB / Y1500SWSB										
M.A.W.P.:	3750 psig at 100 F			End Connection:		N.P.T. / Socket Weld		Drain Connection:		Optional
Body Material:	Carbon Steel (WCB)			Screen:		304 SS		Gasket:		304 SS Sp. Wound
Size:	1/2"	3/4"	1"	1 1/4"	1 1/2"	2"				
Item Price:	244.00	390.00	680.00	727.00	727.00	1000.00				
Spare Gasket Price:	18.00	21.00	24.00	26.00	28.00	32.00				
Std. Screen Size:	0.032"	0.032"	0.032"	0.032"	0.032"	0.032"				
Item Weight - Lbs.:	7	10	16	22	22	30				

ITEM #: Y1500TSSB / Y1500SWSSB										
M.A.W.P.:	3600 psig at 100 F			End Connection:	N.P.T. / Socket Weld			Drain Connection:	Optional	
Body Material:	316 SS (CF8M)			Screen:	304 SS			Gasket:	304 SS Sp. Wound	
Size:	1/2"	3/4"	1"	1 1/4"	1 1/2"	2"				
Item Price:	485.00	628.00	1005.00	1713.00	1713.00	2385.00				
Spare Gasket Price:	18.00	21.00	24.00	26.00	28.00	32.00				
Std. Screen Size:	0.032"	0.032"	0.032"	0.032"	0.032"	0.032"				
Item Weight - Lbs.:	7	10	16	22	22	30				

ITEM #: Y1500T52CMB / Y1500SW52CMB										
M.A.W.P.:	3750 psig at 100 F			End Connection:	N.P.T. / Socket Weld			Drain Connection:	N.P.T.	
Body Material:	Chr. Molly (WC6)			Screen:	304 SS			Gasket:	304 SS Sp. Wound	
Size:	1/2"	3/4"	1"	1 1/4"	1 1/2"	2"				
Item Price:	375.00	530.00	660.00	1055.00	1190.00	1540.00				
Spare Gasket Price:	18.00	21.00	24.00	26.00	28.00	32.00				
Std. Screen Size:	0.032"	0.032"	0.032"	0.032"	0.032"	0.032"				
Item Weight - Lbs.:	7	10	16	22	22	30				

ITEM #: Y1500T52CMT / Y1500SW52CMT										
M.A.W.P.:	3750 psig at 100 F			End Connection:	N.P.T. / Socket Weld			Drain Connection:	N.P.T.	
Body Material:	Chr. Molly (WC6)			Screen:	304 SS			Gasket:	304 SS Sp. Wound	
Size:	1/2"	3/4"	1"	1 1/4"	1 1/2"	2"				
Item Price:	145.00	230.00	400.00							
Spare Gasket Price:	18.00	21.00	24.00							
Std. Screen Size:	0.032"	0.032"	0.032"							
Item Weight - Lbs.:	3	5	7							

Flanged, Buttweld and RTJ Y-Strainers

ITEM #: Y125FIB										
M.A.W.P.:	200/150 psig at 150 F			End Connection:	125 Lb. FF Flanged			Drain Connection:	N.P.T.	
Body Material:	Cast Iron			Screen:	304 SS			Gasket:	Graphite	
Size:	2"	2 1/2"	3"	4"	5"	6"	8"	10"	12"	14"
Item Price:	169.00	198.00	238.00	340.00	550.00	708.00	1170.00	2370.00	2955.00	6605.00
Spare Gasket Price:	10.00	10.00	20.00	20.00	30.00	54.00	74.00	116.00	95.00	136.00
Std. Screen Size:	0.045"	0.045"	0.045"	0.125"	0.125"	0.125"	0.125"	0.125"	0.125"	0.125"
Item Weight - Lbs.:	22	35	43	75	115	154	243	390	650	815
Size:	16"	18"	20"	24"						
Item Price:	8815.00	10900.00	13465.00	16895.00						
Sp. Gasket Price:	274.00	152.00	225.00	268.00						
Std. Screen Size:	0.125"	0.125"	0.125"	0.125"						
Item Weight - Lbs.:	1224	1895	3350	4705						

ITEM #: Y250FDIB										
M.A.W.P.:	500 psig at 150 F			End Connection:	250 Lb. RF Flanged			Drain Connection:	N.P.T.	
Body Material:	Ductile Iron (A395)			Screen:	304 SS			Gasket:	Graphite	
Size:	2"	2 1/2"	3"	4"	5"	6"	8"	10"	12"	
Item Price:	347.00	475.00	666.00	1105.00	1437.00	2033.00	2880.00	5300.00	8355.00	
Spare Gasket Price:	5.00	5.00	10.00	10.00	15.00	26.00	37.00	58.00	95.00	
Std. Screen Size:	0.045"	0.045"	0.045"	0.125"	0.125"	0.125"	0.125"	0.125"	0.125"	
Item Weight - Lbs.:	28	38	54	110	160	224	468	590	750	



ITEM #: Y150FBB										
M.A.W.P.:	225 psig at 150 F			End Connection:	150 Lb. RF Flanged			Drain Connection:	N.P.T.	
Body Material:	Bronze (B62)			Screen:	304 SS			Gasket:	Teflon	
Size:	2"	2 1/2"	3"	4"	5"	6"	8"	10"	12"	
Item Price:	1432.00	2005.00	2515.00	4608.00	6837.00	8980.00	15420.00	25070.00	36280.00	P.O.A.
Spare Gasket Price:	11.00	14.00	17.00	25.00	36.00	55.00	82.00	110.00	165.00	
Std. Screen Size:	0.045"	0.045"	0.045"	0.125"	0.125"	0.125"	0.125"	0.125"	0.125"	
Item Weight - Lbs.:	20	32	36	61	110	160	210	440	585	

ITEM #: Y150FSB										
M.A.W.P.:	285 psig at 100 F			End Connection:	150 Lb. RF Flanged			Drain Connection:	N.P.T.	
Body Material:	Carbon Steel (WCB)			Screen:	304 SS			Gasket:	304 SS Sp. Wound	
Size:	1/2"	3/4"	1"	1-1/4"	1-1/2"	2"	2-1/2"	3"	4"	5"
Item Price:	153.00	199.00	271.00	320.00	339.00	379.00	548.00	665.00	1063.00	1590.00
Spare Gasket Price:	15.00	15.00	17.00	22.00	22.00	27.00	38.00	38.00	46.00	48.00
Std. Screen Size:	0.032"	0.032"	0.032"	0.032"	0.032"	0.045"	0.045"	0.045"	0.125"	0.125"
Item Weight - Lbs.:	6	7	9	11	12	20	32	36	61	110
Size:	6"	8"	10"	12"	14"	16"	18"	20"	24"	
Item Price:	1945.00	3150.00	6768.00	9575.00	P.O.A.	P.O.A.	P.O.A.	P.O.A.	P.O.A.	
Spare Gasket Price:	58.00	68.00	115.00	150.00						
Std. Screen Size:	0.125"	0.125"	0.125"	0.125"						
Item Weight - Lbs.:	160	210	440	585						

ITEM #: Y150FSSB										
M.A.W.P.:	275 psig at 100 F			End Connection:	150 Lb. RF Flanged			Drain Connection:	N.P.T.	
Body Material:	316 SS (CF8M)			Screen:	304 SS			Gasket:	304 SS Sp. Wound	
Size:	1/2"	3/4"	1"	1-1/4"	1-1/2"	2"	2-1/2"	3"	4"	5"
Item Price:	339.00	435.00	580.00	705.00	775.00	1050.00	1730.00	2105.00	3085.00	5210.00
Spare Gasket Price:	15.00	15.00	17.00	22.00	22.00	27.00	38.00	38.00	46.00	48.00
Std. Screen Size:	0.032"	0.032"	0.032"		0.032"	0.045"	0.045"	0.045"	0.125"	0.125"
Item Weight - Lbs.:	6	7	9	11	12	20	32	36	61	110
Size:	6"	8"	10"	12"	14"	16"	18"	20"	24"	
Item Price:	6155.00	9910.00	20735.00	28885.00	P.O.A.	P.O.A.	P.O.A.	P.O.A.	P.O.A.	
Spare Gasket Price:	58.00	68.00	115.00	150.00						
Std. Screen Size:	0.125"	0.125"	0.125"	0.125"						
Item Weight - Lbs.:	160	210	440	585						

ITEM #: Y300FSB										
M.A.W.P.:	740 psig at 100 F			End Connection:	300 Lb. RF Flanged			Drain Connection:	N.P.T.	
Body Material:	Carbon Steel (WCB)			Screen:	304 SS			Gasket:	304 SS Sp. Wound	
Size:	1/2"	3/4"	1"	1-1/4"	1-1/2"	2"	2-1/2"	3"	4"	5"
Item Price:	176.00	280.00	360.00	475.00	475.00	445.00	685.00	965.00	1425.00	3195.00
Spare Gasket Price:	15.00	15.00	17.00	22.00	22.00	27.00	38.00	38.00	46.00	48.00
Std. Screen Size:	0.032"	0.032"	0.032"		0.032"	0.045"	0.045"	0.045"	0.125"	
Item Weight - Lbs.:	8	14	15		26	32	36	55	88	
Size:	6"	8"	10"	12"	14"	16"	18"	20"	24"	
Item Price:	3000.00	4815.00	8660.00	13550.00	P.O.A.	P.O.A.	P.O.A.	P.O.A.	P.O.A.	
Spare Gasket Price:	58.00	68.00	115.00	150.00						
Std. Screen Size:	0.125"	0.125"	0.125"	0.125"						
Item Weight - Lbs.:	200	290	520	680						

ITEM #: Y300BWSB										
M.A.W.P.:	740 psig at 100 F			End Connection:	Buttweld			Drain Connection:	N.P.T.	
Body Material:	Carbon Steel (WCB)			Screen:	304 SS			Gasket:	304 SS Sp. Wound	
Size:	2"	2 1/2"	3"	4"	5"	6"	8"	10"	12"	
Item Price:	1495.00	1605.00	2055.00	2345.00	3660.00	3760.00	5135.00	8170.00	10600.00	
Spare Gasket Price:	27.00	38.00	38.00	46.00	48.00	58.00	68.00	115.00	150.00	
Std. Screen Size:	0.045"	0.045"	0.045"	0.125"	0.125"	0.125"	0.125"	0.125"	0.125"	
Item Weight - Lbs.:	15	25	45	68	90	120	170	360	550	

ITEM #: Y300FSSB										
M.A.W.P.:	720 psig at 100 F			End Connection:	300 Lb. RF Flanged			Drain Connection:	N.P.T.	
Body Material:	316 SS (CF8M)			Screen:	304 SS			Gasket:	304 SS Sp. Wound	
Size:	1/2"	3/4"	1"	1-1/4"	1-1/2"	2"	2-1/2"	3"	4"	5"
Item Price:	470.00	718.00	785.00	P.O.A.	1525.00	1425.00	2165.00	2825.00	4520.00	P.O.A.
Spare Gasket Price:	15.00	15.00	17.00		22.00	27.00	38.00	38.00	46.00	
Std. Screen Size:	0.032"	0.032"	0.032"		0.032"	0.045"	0.045"	0.045"	0.125"	
Item Weight - Lbs:	8	14	15		26	32	36	55	88	
Size:	6"	8"	10"	12"	14"	16"	18"	20"	24"	
Item Price:	8985.00	15295.00	28240.00	43880.00	P.O.A.	P.O.A.	P.O.A.	P.O.A.	P.O.A.	
Spare Gasket Price:	58.00	68.00	115.00	150.00						
Std. Screen Size:	0.125"	0.125"	0.125"	0.125"						
Item Weight - Lbs:	200	290	520	680						

ITEM #: Y600FSB										
M.A.W.P.:	1480 psig at 100 F			End Connection:	RF Flanged			Drain Connection:	N.P.T.	
Body Material:	Carbon Steel (WCB)			Screen:	304 SS			Gasket:	304 SS Sp. Wound	
Size:	2"	2 1/2"	3"	4"	5"	6"	8"	10"	12"	
Item Price:	945.00	P.O.A.	1930.00	3355.00	P.O.A.	6210.00	10100.00	19315.00	28550.00	
Spare Gasket Price:	36.00		48.00	65.00		89.00	106.00	140.00	160.00	
Std. Screen Size:	0.045"		0.045"	0.125"		0.125"	0.125"	0.125"	0.125"	
Item Weight - Lbs:	45		109	197		409	710	1430	1750	

ITEM #: Y600RTJSB										
M.A.W.P.:	1480 psig at 100 F			End Connection:	RTJ Flanged			Drain Connection:	N.P.T.	
Body Material:	Carbon Steel (WCB)			Screen:	304 SS			Gasket:	304SS Oval Ring	
Size:	2"	2 1/2"	3"	4"	5"	6"	8"	10"	12"	
Item Price:	1045.00	P.O.A.	2115.00	3695.00	P.O.A.	6830.00	P.O.A.	P.O.A.	P.O.A.	
Spare Gasket Price:	166.00		356.00	415.00		550.00				
Std. Screen Size:	0.045"		0.045"	0.125"		0.125"	0.125"	0.125"	0.125"	
Item Weight - Lbs:	45		109	197		409	710	1430	1750	

ITEM #: Y600FSSB										
M.A.W.P.:	1440 psig at 100 F			End Connection:	RF Flanged			Drain Connection:	N.P.T.	
Body Material:	316 SS (CF8M)			Screen:	304 SS			Gasket:	304 SS Sp. Wound	
Size:	2"	2 1/2"	3"	4"	5"	6"	8"	10"	12"	
Item Price:	2940.00	P.O.A.	5430.00	10920.00	P.O.A.	19850.00	31615.00	59445.00	77045.00	
Spare Gasket Price:	36.00		48.00	65.00		89.00	106.00	140.00	160.00	
Std. Screen Size:	0.045"		0.045"	0.125"		0.125"	0.125"	0.125"	0.125"	
Item Weight - Lbs:	45		109	197		409	710	1430	1750	

ITEM #: Y600RTJSSB										
M.A.W.P.:	1440 psig at 100 F			End Connection:	RTJ Flanged			Drain Connection:	N.P.T.	
Body Material:	316 SS (CF8M)			Screen:	304 SS			Gasket:	304SS Oval Ring	
Size:	2"	2 1/2"	3"	4"	5"	6"	8"	10"	12"	
Item Price:	3230.00	P.O.A.	5970.00	12010.00	P.O.A.	21835.00	P.O.A.	P.O.A.	P.O.A.	
Spare Gasket Price:	166.00		356.00	415.00		550.00				
Std. Screen Size:	0.045"		0.045"	0.125"		0.125"	0.125"	0.125"	0.125"	
Item Weight - Lbs:	45		109	197		409	710	1430	1750	

ITEM #: Y900FSB										
M.A.W.P.:	2220 psig at 100 F			End Connection:	RF Flanged			Drain Connection:	Optional	
Body Material:	Carbon Steel (WCB)			Screen:	304 SS			Gasket:	304 SS Sp. Wound	
Size:	2"	2 1/2"	3"	4"	5"	6"	8"	10"	12"	
Item Price:	2200.00	P.O.A.	2765.00	4270.00	P.O.A.	9480.00	16875.00	24250.00	P.O.A.	
Spare Gasket Price:	88.00		128.00	172.00		214.00	278.00	320.00		
Std. Screen Size:	0.045"	0.045"	0.045"	0.125"		0.125"	0.125"	0.125"		
Item Weight - Lbs:	125	145	163	253		550	1075	1950		

ITEM #: Y900RTJSB										
M.A.W.P.:	2220 psig at 100 F		End Connection:		RTJ Flanged		Drain Connection:		Optional	
Body Material:	Carbon Steel (WCB)		Screen:		304 SS		Gasket:		304SS Oval Ring	
Size:	2"	2 1/2"	3"	4"	5"	6"	8"	10"	12"	
Item Price:	2415.00	P.O.A.	3040.00	4700.00	P.O.A.	10425.00	18565.00	P.O.A.	P.O.A.	
Spare Gasket Price:	238.00		356.00	415.00		546.00	806.00			
Std. Screen Size:	0.045"	0.045"	0.045"	0.125"		0.125"	0.125"	0.125"		
Item Weight - Lbs:	125	145	163	253		550	1075	1950		

ITEM #: Y900FSSB										
M.A.W.P.:	2160 psig		End Connection:		RF Flanged		Drain Connection:		Optional	
Body Material:	316 SS (CF8M)		Screen:		304 SS		Gasket:		304 SS Sp. Wound	
Size:	2"	2 1/2"	3"	4"	5"	6"	8"	10"	12"	
Item Price:	6605.00	P.O.A.	8600.00	12995.00	P.O.A.	27880.00	P.O.A.	P.O.A.	P.O.A.	
Spare Gasket Price:	88.00		128.00	172.00		214.00				
Std. Screen Size:	0.045"	0.045"	0.045"	0.125"		0.125"				
Item Weight - Lbs:	125	145	163	253		550				

ITEM #: Y900RTJSSB										
M.A.W.P.:	2160 psig		End Connection:		RTJ Flanged		Drain Connection:		Optional	
Body Material:	316 SS (CF8M)		Screen:		304 SS		Gasket:		304SS Oval Ring	
Size:	2"	2 1/2"	3"	4"	5"	6"	8"	10"	12"	
Item Price:	7260.00	P.O.A.	9450.00	14270.00	P.O.A.	30625.00	P.O.A.	P.O.A.	P.O.A.	
Spare Gasket Price:	238.00		356.00	415.00		546.00				
Std. Screen Size:	0.045"	0.045"	0.045"	0.125"		0.125"				
Item Weight - Lbs:	125	145	163	253		550				

ITEM #: Y1500FSB										
M.A.W.P.:	3705 psig at 100 F		End Connection:		RF Flanged		Drain Connection:		Optional	
Body Material:	Carbon Steel (WCB)		Screen:		304 SS		Gasket:		304 SS Sp. Wound	
Size:	2"	2 1/2"	3"	4"	5"	6"	8"	10"	12"	
Item Price:	2200.00	3015.00	4390.00	6470.00	P.O.A.	13780.00	P.O.A.	P.O.A.	P.O.A.	
Spare Gasket Price:	88.00	107.00	128.00	171.00		214.00				
Std. Screen Size:	0.045"	0.045"	0.045"	0.125"		0.125"				
Item Weight - Lbs:	125	197	234	355		812				

ITEM #: Y1500RTJSB										
M.A.W.P.:	3705 psig at 100 F		End Connection:		RTJ Flanged		Drain Connection:		Optional	
Body Material:	Carbon Steel (WCB)		Screen:		304 SS		Gasket:		304 SS Sp. Wound	
Size:	2"	2 1/2"	3"	4"	5"	6"	8"	10"	12"	
Item Price:	2415.00	P.O.A.	4825.00	7115.00	P.O.A.	15155.00	P.O.A.	P.O.A.	P.O.A.	
Spare Gasket Price:	238.00		392.00	463.00		629.00				
Std. Screen Size:	0.045"		0.045"	0.125"		0.125"				
Item Weight - Lbs:	125		234	355		812				

ITEM #: Y1500FSSB										
M.A.W.P.:	3600 psig at 100 F		End Connection:		RF		Drain Connection:		Optional	
Body Material:	316 SS (CF8M)		Screen:		304 SS		Gasket:		304 SS Sp. Wound	
Size:	2"	2 1/2"	3"	4"	5"	6"	8"	10"	12"	
Item Price:	6595.00	9680.00	14395.00	19895.00	P.O.A.	45055.00	P.O.A.	P.O.A.	P.O.A.	
Spare Gasket Price:	88.00	107.00	128.00	171.00		214.00				
Std. Screen Size:	0.045"	0.045"	0.045"	0.125"		0.125"				
Item Weight - Lbs:	125	197	234	355		812				

ITEM #:	Y1500RTJSSB										
M.A.W.P.:	3600 psig at 100 F			End Connection:			RTJ Flanged		Drain Connection:		Optional
Body Material:	316 SS (CF8M)			Screen:			304 SS		Gasket:		304SS Oval Ring
Size:	2"	2 1/2"	3"	4"	5"	6"	8"	10"	12"		
Item Price:	7260.00	P.O.A.	14395.00	21880.00	P.O.A.	49560.00	P.O.A.	P.O.A.	P.O.A.		
Spare Gasket Price:	238.00		392.00	463.00		629.00					
Std. Screen Size:	0.045"		0.045"	0.125"		0.125"					
Item Weight - Lbs:	125		234	355		812					

Y Strainer Machining and Spare Screens

ITEM: Adder Prices to Machine Flanged Units to Butt Weld Connections										
ANSI Class Rating:	600 lb., 900 lb., 1500 lb.									
Body Material:	All materials									
Size:	2"	2 1/2"	3"	4"	5"	6"	8"	10"	12"	
Price Adder:	3537.00	P.O.A.	4674.00	7981.00	P.O.A.	9110.00	10254.00	P.O.A.	P.O.A.	
600 lb. Sched.	40		40	40		40	40			
900 lb. Sched.	80		80	80		80	80			
1500 lb. Sched.	80		80	120		120	140			

ITEM: Spare Screens										
Screen Material:	Type 304 SS (for 316 SS, multiply by 1.5)									
Size:	1/4"	3/8"	1/2"	3/4"	1"	1-1/4"	1-1/2"	2"	2-1/2"	
1/32", 3/64", 1/16", 3/32", 1/8", 5/32", 3/16" 1/4", 3/8", 1/2" PERF	17.00	17.00	17.00	19.00	32.00	48.00	54.00	77.00	107.00	
20, 30, 40, 50, 60, 80, 100,, 125, 150, 200, 250 300, MESH LINING ONLY	10.00	10.00	10.00	11.00	17.00	24.00	27.00	44.00	60.00	
MESH COMPLETE W/ PERF. SUPPORT	25.00	25.00	25.00	31.00	47.00	73.00	81.00	116.00	166.00	
Size:	3"	4"	5"	6"	8"	10"	12"	14"	16"	
1/32", 3/64", 1/16", 3/32", 1/8", 5/32", 3/16" 1/4", 3/8", 1/2" PERF	143.00	238.00	345.00	476.00	797.00	1166.00	1605.00	2104.00	2663.00	
20, 30, 40, 50, 60, 80, 100,, 125, 150, 200, 250 300, MESH LINING ONLY	73.00	119.00	173.00	238.00	398.00	582.00	803.00	1053.00	1332.00	
MESH COMPLETE W/ PERF. SUPPORT	215.00	357.00	518.00	714.00	1196.00	1747.00	2408.00	3157.00	3996.00	

N.P.T. and Socket Weld Basket Strainers

ITEM #:	B125TIR2										
M.A.W.P.:	200 psig at 100 F			End Connection:			N.P.T.		Drain Connection:		Rotating Type
Body Material:	Cast Iron			Screen:			304 SS		Gasket:		Buna-N O-Ring
Size:	1/4"	3/8"	1/2"	3/4"	1"	1 1/2"	2"	2 1/2"	3"		
Item Price:	455.00	455.00	455.00	515.00	593.00	695.00	905.00	1005.00	1175.00		
Spare Gasket Price:	5.00	5.00	5.00	5.00	9.75	9.75	11.00	18.00	22.75		
Std. Screen Size:	0.032"	0.032"	0.032"	0.032"	0.032"	0.032"	0.032"	0.45"	0.45"		
Item Weight - Lbs:	10	18	10	18	18	30	50	62	62		

ITEM #:	B300TSB2 / B300SWSB2						Cover Type:	Bolted			
M.A.W.P.:	740 psig at 100 F			End Connection:	N.P.T. / Socket Weld		Drain Connection:	N.P.T.			
Body Material:	Carbon Steel (WCB)			Screen:	304 SS		Gasket:	304 SS Sp. Wound			
Size:	1/2"	3/4"	1"	1 1/4"	1 1/2"	2"					
Item Price:	376.00	506.00	506.00	775.00	775.00	1057.00					
Spare Gasket Price:	22.00	24.00	24.00	26.00	26.00	33.00					
Std. Screen Size:	0.032"	0.032"	0.032"	0.032"	0.032"	0.032"					
Item Weight - Lbs:	18	24	24	43	43	58					

ITEM #:	B300TSC2 / B300SWSC2						Cover Type:	Bolted			
M.A.W.P.:	100 psig at ambient			End Connection:	N.P.T. / Socket Weld		Drain Connection:	N.P.T.			
Body Material:	Carbon Steel (WCB)			Screen:	304 SS		Gasket:	Rubber			
Size:	1/2"	3/4"	1"	1 1/4"	1 1/2"	2"					
Item Price:	515.00	645.00	645.00	995.00	995.00	1270.00					
Spare Gasket Price:	22.00	24.00	24.00	26.00	26.00	33.00					
Std. Screen Size:	0.032"	0.032"	0.032"	0.032"	0.032"	0.032"					
Item Weight - Lbs:	20	26	26	45	45	60					

ITEM #:	B300TSSB2 / B300SWSSB2						Cover Type:	Bolted			
M.A.W.P.:	720 psig at 100 F			End Connection:	N.P.T. / Socket Weld		Drain Connection:	N.P.T.			
Body Material:	316 ss (CF8M)			Screen:	304 SS		Gasket:	304 SS Sp. Wound			
Size:	1/2"	3/4"	1"	1 1/4"	1 1/2"	2"					
Item Price:	955.00	1185.00	1185.00	2100.00	2100.00	2840.00					
Spare Gasket Price:	22.00	24.00	24.00	26.00	26.00	33.00					
Std. Screen Size:	0.032"	0.032"	0.032"	0.032"	0.032"	0.032"					
Item Weight - Lbs:	18	24	24	43	43	58					

ITEM #:	B300TSSC2 / B300SWSSC2						Cover Type:	C-Clamp			
M.A.W.P.:	100 psig at ambient			End Connection:	N.P.T. / Socket Weld		Drain Connection:	N.P.T.			
Body Material:	316 SS (CF8M)			Screen:	304 SS		Gasket:	Rubber			
Size:	1/2"	3/4"	1"	1 1/4"	1 1/2"	2"					
Item Price:	1155.00	1385.00	1385.00	2400.00	2400.00	3140.00					
Spare Gasket Price:	22.00	24.00	24.00	26.00	26.00	33.00					
Std. Screen Size:	0.032"	0.032"	0.032"	0.032"	0.032"	0.032"					
Item Weight - Lbs:	20	26	26	45	45	60					

Flanged Basket Strainers

ITEM #:	B125FIB1										Cover Type:	Bolted	
M.A.W.P.:	200/150 psig at 150 F			End Connection:	125 Lb. FF Flanged			Drain Connection:	Optional				
Body Material:	Cast Iron			Screen:	304 SS			Gasket:	Rubber				
Size:	2"	2-1/2"	3"	4"	5"	6"	8"	10"	12"	14"			
Item Price:	224.00	300.00	410.00	485.00	760.00	995.00	1860.00	2995.00	4546.00	9045.00			
Spare Gasket Price:	15.00	22.00	22.00	32.00	36.00	42.00	52.00	75.00	87.00	95.00			
Std. Screen Size:	0.045"	0.045"	0.045"	0.125"	0.125"	0.125"	0.125"	0.125"	0.125"	0.125"			
Item Weight - Lbs:	22	31	42	70	90	124	270	385	670	1010			
Size:	16"	18"	20"	24"									
Item Price:	13065.00	16460.00	22395.00	29285.00									
Sp. Gasket Price:	184.00	208.00	230.00	250.00									
Std. Screen Size:	0.125"	0.125"	0.125"	0.125"									
Item Weight - Lbs:	1041	1446	1980	2790									

ITEM #:	B125FIC1						Cover Type:		C-Clamp
M.A.W.P.:	50 psig at ambient		End Connection:		125 Lb. FF Flanged		Drain Connection:		Optional
Body Material:	Cast Iron		Screen:		304 SS		Gasket:		Rubber
Size:	2"	2-1/2"	3"	4"	5"	6"	8"	10"	12"
Item Price:	387.00	455.00	550.00	680.00	915.00	1185.00	1990.00	3095.00	5015.00
Spare Gasket Price:	15.00	22.00	22.00	32.00	36.00	42.00	52.00	75.00	87.00
Std. Screen Size:	0.045"	0.045"	0.045"	0.125"	0.125"	0.125"	0.125"	0.125"	0.125"
Item Weight - Lbs:	22	31	42	70	90	124	270	385	670

ITEM #:	B125FIY1						Cover Type:		Yoke
M.A.W.P.:	200 psig at 150 F		End Connection:		125 Lb. FF Flanged		Drain Connection:		N.P.T.
Body Material:	Cast Iron		Screen:		304 SS		Gasket:		Buna-N O-ring
Size:	2"	2-1/2"	3"	4"	5"	6"	8"	10"	12"
Item Price:	245.00	325.00	410.00	650.00	1015.00	1220.00	1920.00	3350.00	5820.00
Spare Gasket Price:	6.00	6.00	6.00	7.00	7.00	10.00	17.00	24.00	34.00
Std. Screen Size:	0.0625"	0.0625"	0.0625"	0.0625"	0.125"	0.125"	0.125"	0.125"	0.125"
Item Weight - Lbs:	27	29	42	65	95	148	198	350	720

ITEM #:	B150FBB1						Cover Type:		Bolted
M.A.W.P.:	225 psig at 150 F		End Connection:		150 Lb. FF Flanged		Drain Connection:		N.P.T.
Body Material:	Bronze (B62)		Screen:		304 SS		Gasket:		Teflon
Size:	2"	2-1/2"	3"	4"	5"	6"	8"	10"	12"
Item Price:	1790.00	3105.00	3455.00	5580.00	7125.00	9960.00	18055.00	27930.00	47250.00
Spare Gasket Price:	12.00	15.00	19.00	26.00	35.00	55.00	82.00	105.00	150.00
Std. Screen Size:	0.045"	0.045"	0.045"	0.125"	0.125"	0.125"	0.125"	0.125"	0.125"
Item Weight - Lbs:	22	31	42	70	90	124	270	385	670

ITEM #:	B150FSB1						Cover Type:		Bolted
M.A.W.P.:	285 psig at 100 F		End Connection:		150 Lb. RF Flanged		Drain Connection:		N.P.T.
Body Material:	Carbon Steel (WCB)		Screen:		304 SS		Gasket:		304SS Sp. Wound
Size:	2"	2-1/2"	3"	4"	5"	6"	8"	10"	12"
Item Price:	520.00	720.00	998.00	1540.00	2145.00	2390.00	4550.00	6950.00	10760.00
Spare Gasket Price:	30.00	30.00	35.00	38.00	75.00	65.00	80.00	107.00	120.00
Std. Screen Size:	0.045"	0.045"	0.045"	0.125"	0.125"	0.125"	0.125"	0.125"	0.125"
Item Weight - Lbs:	22	31	42	70	100	124	270	385	670

Note: B150FSB1 & FSSB1 come with a Teflon gasket from factory; replacement gasket is 304SS Spiral wound

ITEM #:	B150FSSB1						Cover Type:		Bolted
M.A.W.P.:	275 psig at 100 F		End Connection:		150 Lb. RF Flanged		Drain Connection:		N.P.T.
Body Material:	316 SS (CF8M)		Screen:		304 SS		Gasket:		304SS Sp. Wound
Size:	2"	2-1/2"	3"	4"	5"	6"	8"	10"	12"
Item Price:	1315.00	1500.00	2230.00	3340.00	P.O.A.	5520.00	10120.00	14475.00	24765.00
Spare Gasket Price:	30.00	30.00	35.00	38.00		65.00	80.00	107.00	120.00
Std. Screen Size:	0.045"	0.045"	0.045"	0.125"		0.125"	0.125"	0.125"	0.125"
Item Weight - Lbs:	22	31	42	70		124	270	385	670

ITEM #:	B150FSB2						Cover Type:		Bolted
M.A.W.P.:	285 psig at 100 F		End Connection:		150 Lb. RF Flanged		Drain Connection:		N.P.T.
Body Material:	Carbon Steel (WCB)		Screen:		304 SS		Gasket:		304 SS Sp. Wound
Size:	1-1/2"	2"	3"	4"	6"	8"			
Item Price:	475.00	830.00	1515.00	2150.00	4260.00	6705.00			
Spare Gasket Price:	25.00	30.00	35.00	38.00	65.00	80.00			
Std. Screen Size:	0.045"	0.045"	0.045"	0.125"	0.125"	0.125"			
Item Weight - Lbs:	24	46	85	120	237	372			

ITEM #:	B150FSSB2						Cover Type:	Bolted		
M.A.W.P.:	275 psig at 100 F		End Connection:	150 Lb. RF Flanged		Drain Connection:	N.P.T.			
Body Material:	316 SS (CF8M)		Screen:	304 SS		Gasket:	304 SS Sp. Wound			
Size:	1-1/2"	2"	3"	4"	6"	8"				
Item Price:	1530.00	2230.00	3800.00	5640.00	11495.00	19610.00				
Spare Gasket Price:	25.00	30.00	35.00	38.00	65.00	80.00				
Std. Screen Size:	0.045"	0.045"	0.045"	0.125"	0.125"	0.125"				
Item Weight - Lbs:	24	46	85	120	237	372				

Flanged Dual Basket Assembly Strainers

NOTE: Pricing for spare gaskets are for one [1]; you need to double this for both sides

ITEM #:	DB125FIBC2						Cover Type:	Bolted		
M.A.W.P.:	200 psig at 100 F		End Connection:	125 lb. FF Flanged		Drain Connection:	N.P.T.			
Body Material:	Cast Iron		Screen:	304 SS		Gasket:	Rubber			
Size:	2"	2-1/2"	3"	4"	5"	6"	8"	10"	12"	
Item Price:	P.O.A.	P.O.A.	P.O.A.	6075.00	7484.00	8861.00	13916.00	23911.00	36474.00	
Spare Gasket Price:				32.00	36.00	42.00	52.00	75.00	87.00	
Std. Screen Size:				0.125"	0.125"	0.125"	0.125"	0.125"	0.125"	
Item Weight - Lbs:				350	500	800	1350	2050	4700	

ITEM #:	DB125FICC2						Cover Type:	C-Clamp		
M.A.W.P.:	50 psig at ambient		End Connection:	125 lb. FF Flanged		Drain Connection:	N.P.T.			
Body Material:	Cast Iron		Screen:	304 SS		Gasket:	Rubber			
Size:	2"	2-1/2"	3"	4"	5"	6"	8"	10"	12"	
Item Price:	P.O.A.	P.O.A.	P.O.A.	7371.00	8942.40	10238.40	15600.60	25758.00	38880.00	
Spare Gasket Price:				32.00	36.00	42.00	52.00	75.00	87.00	
Std. Screen Size:				0.125"	0.125"	0.125"	0.125"	0.125"	0.125"	
Item Weight - Lbs:				350	500	800	1350	2050	4700	

Flanged Suction Diffusers

(Inlet x Outlet/pump)

ITEM #:	SC125FIB						Cover Type:	Bolted		
M.A.W.P.:	200/150 psig at 150 F		End Connection:	125 Lb. FF Flanged		Drain Connection:	Standard			
Body Material:	Cast Iron		Screen:	304 SS		Gasket:	Buna-N O-Ring			
Size:	2"x1-1/2"	2"x2"	2-1/2"x2"	2-1/2"x2-1/2"	3"x2"	3"x2-1/2"	3"x3"	4"x3"	4"x4"	5"x4"
Item Price:	155.00	165.00	210.00	220.00	225.00	290.00	310.00	410.00	425.00	620.00
Spare Gasket Price:	8.00	8.00	12.00	12.00	16.00	16.00	16.00	28.00	28.00	36.00
Std. Screen Size:	0.032"	0.032"	0.032"	0.032"	0.032"	0.032"	0.032"	0.125"	0.125"	0.125"
Item Weight - Lbs:	21	21	23	32	34	45	49	55	70	92
Size:	5"x5"	6"x4"	6"x5"	6"x6"	8"x5"	8"x6"	8"x8"	10"x8"	10"x10"	12"x8"
Item Price:	630.00	655.00	825.00	875.00	1035.00	1055.00	1435.00	1820.00	2145.00	2590.00
Spare Gasket Price:	36.00	36.00	44.00	44.00	44.00	44.00	88.00	88.00	124.00	124.00
Std. Screen Size:	0.125"	0.125"	0.125"	0.125"	0.125"	0.125"	0.125"	0.125"	0.125"	0.125"
Item Weight - Lbs:	97	132	145	182	197	197	292	312	422	412
Size:	12"x10"	12"x12"								
Item Price:	2725.00	3130.00								
Spare Gasket Price:	150.00	150.00								
Std. Screen Size:	0.125"	0.125"								
Item Weight - Lbs:	491	573								

Basket, Dual Basket & Suction Diffuser Spare Baskets

ITEM: Spare Baskets									
Screen Material:	Type 304 SS (for 316 SS, multiply by 1.5)								
Size:	1/4"	3/8"	1/2"	3/4"	1"	1-1/4"	1-1/2"	2"	2-1/2"
1/32", 3/64", 1/16", 3/32", 1/8", 5/32", 3/16" 1/4", 3/8", 1/2" PERF	N/A	N/A	114.00	114.00	114.00	114.00	114.00	114.00	174.00
20, 30, 40, 50, 60, 80, 100, 125, 150, 200, 250 300, MESH LINING ONLY	N/A	N/A	58.00	58.00	58.00	58.00	58.00	58.00	88.00
MESH COMPLETE W/ PERF. SUPPORT	N/A	N/A	171.00	171.00	171.00	171.00	171.00	171.00	262.00
Size:	3"	4"	5"	6"	8"	10"	12"	14"	16"
1/32", 3/64", 1/16", 3/32", 1/8", 5/32", 3/16" 1/4", 3/8", 1/2" PERF	200.00	256.00	399.00	553.00	796.00	995.00	1192.00	1392.00	1591.00
20, 30, 40, 50, 60, 80, 100, 125, 150, 200, 250 300, MESH LINING ONLY	100.00	128.00	200.00	277.00	399.00	498.00	596.00	697.00	796.00
MESH COMPLETE W/ PERF. SUPPORT	299.00	384.00	598.00	831.00	1195.00	1493.00	1788.00	2087.00	2385.00

Perforated Cone & Basket Strainers

ITEM #:	TC150SS4W1 / TC300SS4W1 / TC600SS4W1									
Type:	Conical		Connection:		150 lb. Wafer		Face Finish:		Smooth	
Ring Material:	304 SS		Screen Material:		Priced as 304SS		316SS available			
Size:	O.A.	3/4"	1"	1-1/2"	2"	2-1/2"	3"	4"	5"	6"
Perforation:	100%	112.00	112.00	125.00	151.00	210.00	230.00	267.00	356.00	392.00
Perf c/w Mesh		159.00	159.00	174.00	201.00	262.00	285.00	362.00	456.00	500.00
Perforation:	150%	114.00	114.00	128.00	158.00	217.00	238.00	282.00	382.00	430.00
Perf c/w Mesh		161.00	161.00	178.00	211.00	276.00	300.00	379.00	492.00	556.00
Perforation:	200%	115.00	115.00	132.00	164.00	226.00	247.00	295.00	475.00	570.00
Perf c/w Mesh		164.00	164.00	181.00	222.00	287.00	314.00	400.00	529.00	624.00
Std. Screen Size		0.045"	0.045"	0.045"	0.045"	0.045"	0.045"	0.125"	0.125"	0.125"
Item Weight - Lbs.:		1	1	1	1	1	1	2	2	3
Size:	O.A.	8"	10"	12"	14"	16"	18"	20"	24"	
Perforation:	100%	488.00	672.00	783.00	961.00	1147.00	1380.00	1556.00	2072.00	
Perf c/w Mesh		652.00	921.00	1070.00	1287.00	1536.00	1842.00	2086.00	2842.00	
Perforation:	150%	552.00	787.00	954.00	1155.00	1392.00	1682.00	1922.00	2568.00	
Perf c/w Mesh		748.00	1092.00	1328.00	1575.00	1901.00	2294.00	2632.00	3618.00	
Perforation:	200%	627.00	901.00	1013.00	1345.00	1612.00	1983.00	2318.00	3166.00	
Perf c/w Mesh		863.00	1261.00	1413.00	1861.00	2719.00	2745.00	3225.00	4172.00	
Std. Screen Size	0.125"	0.125"	0.125"	0.125"	0.125"	0.125"	0.125"	0.125"	0.125"	
Item Weight - Lbs.:		6	8	14	28	32	36	40	48	

ITEM #:	TB150SS4W1 / TB300SS4W1 / TB600SS4W1			Available Mesh Sizes: 20, 30, 40, 50, 60, 80, 100, 125, 150, 200, 250, 300						
Type:	Basket	Connection:		150 lb. Wafer			Face Finish:		Smooth	
Ring Material:	304 SS		Screen Material:		Priced as 304SS			316SS available		
Size:	O.A.	3/4"	1"	1-1/2"	2"	2-1/2"	3"	4"	5"	6"
Perforation:	100%	112.00	112.00	125.00	152.00	210.00	230.00	268.00	358.00	392.00
Perf c/w Mesh		159.00	159.00	174.00	202.00	262.00	284.00	362.00	456.00	500.00
Perforation:	150%	114.00	114.00	128.00	158.00	217.00	238.00	282.00	382.00	429.00
Perf c/w Mesh		161.00	161.00	178.00	210.00	276.00	300.00	379.00	492.00	555.00
Perforation:	200%	115.00	115.00	132.00	164.00	226.00	248.00	295.00	475.00	570.00
Perf c/w Mesh		163.00	163.00	182.00	222.00	284.00	314.00	399.00	558.00	625.00
Std. Screen Size		0.045"	0.045"	0.045"	0.045"	0.045"	0.045"	0.125"	0.125"	0.125"
Item Weight - Lbs.:		1	1	1	1	1	1	2	2	3
Size:	O.A.	8"	10"	12"	14"	16"	18"	20"	24"	
Perforation:	100%	488.00	672.00	783.00	962.00	1147.00	1380.00	1556.00	2072.00	
Perf c/w Mesh		652.00	921.00	1070.00	1287.00	1536.00	1842.00	2086.00	2842.00	
Perforation:	150%	552.00	787.00	954.00	1155.00	1392.00	1682.00	1922.00	2586.00	
Perf c/w Mesh		748.00	1092.00	1328.00	1575.00	1902.00	2294.00	2632.00	3565.00	
Perforation:	200%	628.00	902.00	1013.00	1345.00	1612.00	1983.00	2318.00	3178.00	
Perf c/w Mesh		863.00	1262.00	1413.00	1862.00	2719.00	2745.00	3225.00	4505.00	
Std. Screen Size	0.125"	0.125"	0.125"	0.125"	0.125"	0.125"	0.125"	0.125"	0.125"	
Item Weight - Lbs.:		6	8	14	28	32	36	40	48	

Dual Disc Check Valves

ITEM#:	DC125WIBB		(DC126WIBB)								
M.A.W.P.	200/150 psig at 150 F		End Connection:		Wafer			Seat Material:		Buna-N	
Body:	Cast Iron		Disc Material:		Bronze			Spring:		Stainless Steel	
Size	2"	2-1/2"	3"	4"	5"	6"	8"	10"	12"	14"	
Item Price:	56.00	68.00	100.00	153.00	205.00	295.00	515.00	845.00	1200.00	1880.00	
Unit Weight - Lbs	4.5	5.5	7	11.5	15	20	34	57	83	117	
Size	16"	18"	20"	24"							
Item Price:	2755.00	4130.00	5050.00	7010.00							
Unit Weight - Lbs	155	177	215	315							

ITEM#:	DC125WISSB		(DC126WISSB)								
M.A.W.P.	200/150 psig at 150 F		End Connection:		Wafer			Seat Material:		Buna-N	
Body:	Cast Iron		Disc Material:		316 SS			Spring:		Stainless Steel	
Size	2"	2-1/2"	3"	4"	5"	6"	8"	10"	12"	14"	
Item Price:	48.00	60.00	85.00	130.00	160.00	230.00	415.00	685.00	980.00	1570.00	
Unit Weight - Lbs	4.5	5.5	7	11.5	15	20	34	57	83	117	
Size	16"	18"	20"	24"							
Item Price:	2130.00	3180.00	4025.00	5910.00							
Unit Weight - Lbs	155	177	215	315							

ITEM#:	DR150WSSSV										
M.A.W.P.	285 psig at 100 F		End Connection:		Wafer			Seat Material:		Viton	
Body:	Carbon Steel (WCB)		Disc Material:		316 SS			Spring:		Stainless Steel	
Size	2"	2-1/2"	3"	4"	5"	6"	8"	10"	12"	14"	
Item Price:	243.00	316.00	351.00	509.00	P.O.A.	1053.00	1256.00	2156.00	3259.00	3811.00	
Unit Weight - Lbs	7	11	13	18	30	35	63	106	180	270	
Size	16"	18"	20"	24"							
Item Price:	4964.00	6224.00	7923.00	10781.00							
Unit Weight - Lbs	295	312	472	788							

ITEM#:	DR150WLCSSV										
M.A.W.P.	290 psig at 100 F				End Connection:	Wafer		Seat Material:	Viton		
Body:	Carbon Steel (LCC)				Disc Material:	316 SS		Spring:	Stainless Steel		
Size	2"	2-1/2"	3"	4"	5"	6"	8"	10"	12"	14"	
Item Price:	259.00	338.00	371.00	545.00	P.O.A.	950.00	1344.00	2260.00	3503.00	4065.00	
Unit Weight - Lbs	7	11	13	18	30	35	63	106	180	270	
Size	16"	18"	20"	24"							
Item Price:	5300.00	6367.00	8445.00	11428.00							
Unit Weight - Lbs	295	312	472	788							

ITEM#:	DR150WSSSM10										
M.A.W.P.	285 psig at 100 F				End Connection:	Wafer		Seat Material:	API Overlay		
Body:	Carbon Steel (WCB)				Disc Material:	316 SS		Spring:	Inconel		
Size	2"	2-1/2"	3"	4"	5"	6"	8"	10"	12"	14"	
Item Price:	347.00	431.00	511.00	747.00	P.O.A.	1274.00	1920.00	2853.00	4317.00	4959.00	
Unit Weight - Lbs	7	11	13	18	30	35	63	106	180	270	
Size	16"	18"	20"	24"							
Item Price:	6980.00	9466.00	11053.00	14336.00							
Unit Weight - Lbs	295	312	472	788							

ITEM#:	DR150WSSSV										
M.A.W.P.	275 psig at 100 F				End Connection:	Wafer		Seat Material:	Viton		
Body:	316 SS (CF8M)				Disc Material:	316 SS		Spring:	Stainless Steel		
Size	2"	2-1/2"	3"	4"	5"	6"	8"	10"	12"	14"	
Item Price:	426.00	542.00	621.00	942.00	P.O.A.	1709.00	2107.00	3661.00	6048.00	6414.00	
Unit Weight - Lbs	7	11	13	18	30	35	63	106	180	270	
Size	16"	18"	20"	24"							
Item Price:	9248.00	10804.00	13107.00	19427.00							
Unit Weight - Lbs	295	312	472	788							

ITEM#:	DR150WSSSM10										
M.A.W.P.	275 psig at 100 F				End Connection:	Wafer		Seat Material:	Metal		
Body:	316 SS (CF8M)				Disc Material:	316 SS		Spring:	Inconel		
Size	2"	2-1/2"	3"	4"	5"	6"	8"	10"	12"	14"	
Item Price:	501.00	614.00	834.00	1132.00	P.O.A.	1852.00	2930.00	4338.00	6468.00	8535.00	
Unit Weight - Lbs	7		11	18	30	35	63	106	180	270	
Size	16"	18"	20"	24"							
Item Price:	12120.00	13223.00	18889.00	24526.00							
Unit Weight - Lbs	295	312	472	788							

ITEM#:	DR300WSSV										
M.A.W.P.	740 psig at 100 F				End Connection:	Wafer		Seat Material:	Viton		
Body:	Carbon Steel (WCB)				Disc Material:	316 SS		Spring:	Stainless Steel		
Size	2"	2-1/2"	3"	4"	5"	6"	8"	10"	12"	14"	
Item Price:	290.00	301.00	416.00	574.00	P.O.A.	1254.00	1490.00	2457.00	3510.00	5206.00	
Unit Weight - Lbs	7	11	13	18	30	44	76	126	200	390	
Size	16"	18"	20"	24"							
Item Price:	7672.00	9256.00	11533.00	14892.00							
Unit Weight - Lbs	458	650	801	1150							

ITEM#:	DR300WLCSSV										
M.A.W.P.	740 psig at 100 F				End Connection:	Wafer		Seat Material:	Viton		
Body:	Carbon Steel (LCC)				Disc Material:	316 SS		Spring:	Stainless Steel		
Size	2"	2-1/2"	3"	4"	5"	6"	8"	10"	12"	14"	
Item Price:	310.00	371.00	417.00	617.00	P.O.A.	1107.00	1741.00	2658.00	3761.00	5791.00	
Unit Weight - Lbs	7	11	13	18	30	44	76	126	200	390	
Size	16"	18"	20"	24"							
Item Price:	8424.00	10470.00	12586.00	16246.00							
Unit Weight - Lbs	458	650	801	1150							

ITEM#:	DR300WSSSM10										
M.A.W.P.	740 psig at 100 F				End Connection:	Wafer		Seat Material:	API Overlay		
Body:	Carbon Steel (WCB)				Disc Material:	316 SS		Spring:	Inconel		
Size	2"	2-1/2"	3"	4"	5"	6"	8"	10"	12"	14"	
Item Price:	395.00	461.00	552.00	782.00	P.O.A.	1474.00	2188.00	3219.00	4588.00	6975.00	
Unit Weight - Lbs	7	11	13	18	30	44	76	126	200	390	
Size	16"	18"	20"	24"							
Item Price	9863.00	12466.00	14605.00	18768.00							
Unit Weight - Lbs	458	650	801	1150							

ITEM#:	DR300WSSSV										
M.A.W.P.	720 psig at 100 F				End Connection:	Wafer		Seat Material:	Viton		
Body:	316 SS (CF8M)				Disc Material:	316 SS		Spring:	Stainless Steel		
Size	2"	2-1/2"	3"	4"	5"	6"	8"	10"	12"	14"	
Item Price:	509.00	672.00	806.00	979.00	P.O.A.	2065.00	2828.00	4806.00	6951.00	10957.00	
Unit Weight - Lbs	7	11	13	18	30	44	76	126	200	390	
Size	16"	18"	20"	24"							
Item Price:	16848.00	19747.00	24620.00	30988.00							
Unit Weight - Lbs	458	650	801	1150							

ITEM#:	DR300WSSSM10										
M.A.W.P.	720 psig at 100 F				End Connection:	Wafer		Seat Material:	Metal		
Body:	316 SS (CF8M)				Disc Material:	316 SS		Spring:	Inconel		
Size	2"	2-1/2"	3"	4"	5"	6"	8"	10"	12"	14"	
Item Price:	552.00	802.00	953.00	1170.00	P.O.A.	2421.00	4011.00	5654.00	8751.00	13414.00	
Unit Weight - Lbs	7	11	13	18	30	44	76	126	200	390	
Size	16"	18"	20"	24"							
Item Price:	19024.00	25773.00	27965.00	34598.00							
Unit Weight - Lbs	458	650	801	1150							

ITEM#:	DR600WSSV										
M.A.W.P.	1480 psig at 100 F				End Connection:	Wafer (RF/RJ)		Seat Material:	Viton		
Body:	Carbon Steel (WCB)				Disc Material:	316 SS		Spring:	Stainless Steel		
Size	2"	2-1/2"	3"	4"	5"	6"	8"	10"	12"	14"	
Item Price:	363.00	391.00	469.00	716.00	P.O.A.	1658.00	2754.00	4400.00	6309.00	7613.00	
Unit Weight - Lbs	7	11	13	28	30	80	160	260	360	410	
Size	16"	18"	20"	24"							
Item Price:	9504.00	13694.00	16870.00	23968.00							
Unit Weight - Lbs	728	870	1196	1802							

ITEM#:	DR600WLCSSV										
M.A.W.P.	1500 psig at 100 F				End Connection:	Wafer (RF/RJ)		Seat Material:	Viton		
Body:	Carbon Steel (LCC)				Disc Material:	316 SS		Spring:	Stainless Steel		
Size	2"	2-1/2"	3"	4"	5"	6"	8"	10"	12"	14"	
Item Price:	389.00	421.00	501.00	766.00	P.O.A.	1775.00	2946.00	4688.00	6751.00	8146.00	
Unit Weight - Lbs	7	11	13	28	30	80	160	260	360	410	
Size	16"	18"	20"	24"							
Item Price:	10169.00	14653.00	18183.00	26576.00							
Unit Weight - Lbs	728	870	1196	1802							

ITEM#:	DR600WSSSM10										
M.A.W.P.	1480 psig at 100 F				End Connection:	Wafer (RF/RJ)		Seat Material:	API Overlay		
Body:	Carbon Steel (WCB)				Disc Material:	316 SS		Spring:	Inconel		
Size	2"	2-1/2"	3"	4"	5"	6"	8"	10"	12"	14"	
Item Price:	451.00	532.00	607.00	903.00	P.O.A.	1933.00	3309.00	5058.00	7446.00	9527.00	
Unit Weight - Lbs	7	11	13	28	30	80	160	260	360	410	
Size	16"	18"	20"	24"							
Item Price:	11670.00	16901.00	20513.00	28471.00							
Unit Weight - Lbs	728	870	1196	1802							

ITEM#:	DR600WSSSSV										
M.A.W.P.	1440 psig at 100 F				End Connection:	Wafer (RF/RJ)		Seat Material:	Viton		
Body:	316 SS (CF8M)				Disc Material:	316 SS		Spring:	Stainless Steel		
Size	2"	2-1/2"	3"	4"	5"	6"	8"	10"	12"	14"	
Item Price:	600.00	772.00	921.00	1279.00	P.O.A.	3796.00	5407.00	11672.00	16932.00	19780.00	
Unit Weight - Lbs	7	11	13	28	30	80	160	260	360	410	
Size	16"	18"	20"	24"							
Item Price:	21634.00	30647.00	38983.00	55157.00							
Unit Weight - Lbs	728	870	1196	1802							

ITEM#:	DR600WSSSSM10										
M.A.W.P.	1440 psig at 100 F				End Connection:	Wafer (RF/RJ)		Seat Material:	Metal		
Body:	316 SS (CF8M)				Disc Material:	316 SS		Spring:	Inconel		
Size	2"	2-1/2"	3"	4"	5"	6"	8"	10"	12"	14"	
Item Price:	602.00	852.00	1003.00	1478.00	P.O.A.	4011.00	5917.00	11834.00	17750.00	18252.00	
Unit Weight - Lbs	7	11	13	28	30	80	160	260	360	410	
Size	16"	18"	20"	24"							
Item Price:	24518.00	34339.00	43339.00	60637.00							
Unit Weight - Lbs	728	870	1196	1802							

Dual Disc Check Valve Inconel X750 Springs

ITEM: Inconel X750 Valve Springs										
Size	2"	2-1/2"	3"	4"	5"	6"	8"	10"	12"	14"
Item Price:	60.00	60.00	60.00	60.00	135.00	135.00	260.00	425.00	510.00	750.00
Unit Weight - Lbs	1	1	1	1	1	2	2	3	3	3
Size	16"	18"	20"	24"						
Item Price:	1165.00	1205.00	1370.00	2520.00						
Unit Weight - Lbs	4	4	4	4						

Silent Threaded (N.P.T.) Check Valves

NOTE: Socketweld end caps available, consult factory for pricing and availability

ITEM #:	SC600TSSSSM										
M.A.W.P.:	600 psig at 150 F				End Connection:	N.P.T.		Seat Material:	Metal		
Body Material:	316 SS (CF8M)				Disc Material:	316 SS (CF8M)		Spring:	Stainless Steel		
Size:	1/4"	3/8"	1/2"	3/4"	1"	1-1/4"	1-1/2"	2"	2-1/2"	3"	
Item Price:	73.00	73.00	94.00	114.00	148.00	206.00	260.00	420.00	690.00	1060.00	
Item Weight - Lbs.:	1	1	1	3	3.5	4	5	5.5	6	7	
Size:	4"										
Item Price:	1850.00										
Item Weight - Lbs.:	1										

Note: 1-1/4" SC600 is a 1-1/2" SC600 bushed down

Silent Wafer Check Valves

ITEM #:	SC125WIBM										
M.A.W.P.:	200 psig at 150 F				End Connection:	Wafer		Seat Material:	Bronze		
Body Material:	Cast Iron				Disc Material:	Bronze		Spring:	Stainless Steel		
Size:	2"	2-1/2"	3"	4"	5"	6"	8"	10"	12"		
Item Price:	139.00	168.00	232.00	455.00	660.00	840.00	1960.00	3160.00	5835.00		
Item Weight - Lbs.:	5	7	10	18	27	39	89	173	240		

ITEM #: SC125WISSM										
M.A.W.P.:	200 psig at 150 F		End Connection:		Wafer		Seat Material:		Stainless Steel	
Body Material:	Cast Iron		Disc Material:		316 SS		Spring:		Stainless Steel	
Size:	2"	2-1/2"	3"	4"	5"	6"	8"	10"	12"	
Item Price:	155.00	185.00	255.00	500.00	730.00	925.00	2155.00	3475.00	6420.00	
Item Weight - Lbs.:	5	7	10	18	29	39	89	173	240	

ITEM #: SC150WSSSM										
M.A.W.P.:	285 psig at 100 F		End Connection:		Wafer		Seat Material:		316 SS	
Body Material:	Carbon Steel		Disc Material:		316 SS		Spring:		Stainless Steel	
Size:	2"	2-1/2"	3"	4"	5"	6"	8"	10"	12"	
Item Price:	189.00	227.00	310.00	540.00	870.00	1165.00	2475.00	4070.00	7345.00	
Item Weight - Lbs.:	5	7	10	18	27	39	89	173	240	

ITEM #: SC150WSSSSM										
M.A.W.P.:	275 psig at 100 F		End Connection:		Wafer		Seat Material:		316 SS	
Body Material:	316 SS (CF8M)		Disc Material:		316 SS		Spring:		Stainless Steel	
Size:	2"	2-1/2"	3"	4"	5"	6"	8"	10"	12"	
Item Price:	205.00	323.00	550.00	925.00	1610.00	2125.00	4685.00	8265.00	18530.00	
Item Weight - Lbs.:	5	7	10	18	27	39	89	173	240	

Silent Flanged Check Valves

ITEM #: SC125FIBM										
M.A.W.P.:	200/150 psig at 150 F		End Connection:		125 Lb. FF Flanged		Seat Material:		Bronze	
Body Material:	Cast Iron		Disc Material:		Bronze		Spring:		Stainless Steel	
Size:	2"	2-1/2"	3"	4"	5"	6"	8"	10"	12"	14"
Item Price:	420.00	540.00	665.00	900.00	1355.00	1615.00	2710.00	4100.00	6800.00	10660.00
Item Weight - Lbs.:	14	23	26	59	74	96	178	288	350	525
Size:	16"	18"								
Item Price:	12725.00	14135.00								
Item Weight - Lbs.:	650									

ITEM #: SC150FSSSM										
M.A.W.P.:	285 psig at 100 F		End Connection:		150 Lb. RF Flanged		Seat Material:		316 SS	
Body Material:	Carbon Steel		Disc Material:		316 SS		Spring:		Stainless Steel	
Size:	2"	2-1/2"	3"	4"	5"	6"	8"	10"	12"	14"
Item Price:	620.00	750.00	970.00	1360.00	1800.00	2350.00	4050.00	6200.00	9820.00	13350.00
Item Weight - Lbs.:	14	23	26	59	74	96	178	288	350	
Size:	16"	18"	20"	24"						
Item Price:	17995.00	P.O.A.	P.O.A.	P.O.A.						
Item Weight - Lbs.:										

ITEM #: SC150FSSSSM										
M.A.W.P.:	275 psig at 100 F		End Connection:		150 Lb. RF Flanged		Seat Material:		316 SS	
Body Material:	316 SS (CF8M)		Disc Material:		316 SS		Spring:		Stainless Steel	
Size:	2"	2-1/2"	3"	4"	5"	6"	8"	10"	12"	14"
Item Price:	1385.00	1835.00	2725.00	3415.00	4650.00	5390.00	9720.00	15500.00	29450.00	P.O.A.
Item Weight - Lbs.:	14	23	26	59	74	96	178	288	350	
Size:	16"	18"	20"	24"						
Item Price:	P.O.A.	P.O.A.	P.O.A.	P.O.A.						
Item Weight - Lbs.:										

ITEM #:	SC300FSSSM										
M.A.W.P.:	740 psig at 100 F			End Connection:	300 Lb. RF Flanged			Seat Material:	316 SS		
Body Material:	Carbon Steel			Disc Material:	316 SS			Spring:	Stainless Steel		
Size:	2"	2-1/2"	3"	4"	5"	6"	8"	10"	12"	14"	
Item Price:	1050.00	1270.00	1600.00	2410.00	3330.00	4090.00	7490.00	11500.00	16910.00	P.O.A.	
Item Weight - Lbs.:	14	23	26	59	74	96	178	288	350		
Size:	16"	18"	20"	24"							
Item Price:	P.O.A.	P.O.A.	P.O.A.	P.O.A.							
Item Weight - Lbs.:											

ITEM #:	SC300FSSSSM										
M.A.W.P.:	720 psig at 100 F			End Connection:	300 Lb. RF Flanged			Seat Material:	316 SS		
Body Material:	316 SS (CF8M)			Disc Material:	316 SS			Spring:	Stainless Steel		
Size:	2"	2-1/2"	3"	4"	5"	6"	8"	10"	12"		
Item Price:	3205.00	3720.00	4930.00	7475.00	10745.00	12110.00	21875.00	35500.00	64200.00		
Item Weight - Lbs.:	14	23	26	59	74	96	178	288	350		
Size:	16"	18"	20"	24"							
Item Price:	P.O.A.	P.O.A.	P.O.A.	P.O.A.							
Item Weight - Lbs.:											

Soft Seats for Silent Check Valves

ITEM:	Soft Seat Adder for Silent Check Valves									
Material	Viton									
Size:	2"	2-1/2"	3"	4"	5"	6"	8"	10"	12"	
Item Price:	644.00	686.00	690.00	925.00	965.00	1010.00	1095.00	1185.00	1200.00	

Foot Valves

ITEM #:	FV125FIBB										
M.A.W.P.:	200/150 psig at 150 F			End Connection:	125 lb. FF Flanged			Seat Material:	Buna-N		
Body Material:	Ductile Iron			Disc Material:	Bronze			Spring:	None		
Size:	2"	2-1/2"	3"	4"	5"	6"	8"	10"	12"	14"	
Item Price:	1165.00	1430.00	1595.00	2055.00	2615.00	3380.00	4185.00	6350.00	9080.00	13850.00	
Item Weight - Lbs.:	25	32	45	70	90	115	181	265	425	550	
Size:	16"										
Item Price:	P.O.A.										
Item Weight - Lbs.:	695										

ITEM #:	FV150FSSSB										
M.A.W.P.:	285 psig at 100 F			End Connection:	150 lb. RF Flanged			Seat Material:	Buna-N		
Body Material:	Carbon Steel (WCB)			Disc Material:	316 SS			Spring:	None		
Size:	2"	2-1/2"	3"	4"	5"	6"	8"	10"	12"	14"	
Item Price:	1445.00	1685.00	1915.00	2590.00	3235.00	3670.00	5715.00	8185.00	11865.00	P.O.A.	
Item Weight - Lbs.:	32	42	55	88	110	140	215	310	500	550	
Size:	16"	18"	20"	24"							
Item Price:	P.O.A.	P.O.A.	P.O.A.	P.O.A.							
Item Weight - Lbs.:	695										

ITEM #:	FV150FSSSV									
M.A.W.P.:	275 psig at 100 F		End Connection:		150 lb. RF Flanged		Seat Material:		Viton	
Body Material:	316 SS		Disc Material:		316 SS		Spring:		None	
Size:	2"	2-1/2"	3"	4"	5"	6"	8"	10"	12"	14"
Item Price:	2500.00	3175.00	4100.00	5090.00	6865.00	7735.00	12830.00	19695.00	35090.00	P.O.A.
Item Weight - Lbs.:	32	42	55	88	110	140	215	310	500	550
Size:	16"	18"	20"	24"						
Item Price:	P.O.A.	P.O.A.	P.O.A.	P.O.A.						
Item Weight - Lbs.:	695									

Resilient Seated Butterfly Valves

ITEM #:	BI126WDBB/EB										Operator: Bare	
M.A.W.P.:	200/150 psig at 150 F		End Connection:		Wafer		Seat Material:		Buna-N / EPDM			
Body Material:	Ductile Iron		Disc Material:		Ductile Iron		Shaft Material:		416 SS			
Size:	2"	2-1/2"	3"	4"	5"	6"	8"	10"	12"	14"		
Item Price:	48.00	61.00	72.00	100.00	137.00	159.00	244.00	370.00	510.00	721.00		
Item Weight - Lbs.:	6	7	10	13	18	20	32	42	70	95		
Size:	16"	18"	20"	24"	30"	36"	42"	48"				
Item Price:	1224.00	1509.00	1814.00	3296.00	P.O.A.	P.O.A.	P.O.A.	P.O.A.				
Item Weight - Lbs.:	117	165	275	440								

ITEM #:	BI126WDBB/EB										Operator: Bare	
M.A.W.P.:	200/150 psig at 150 F		End Connection:		Wafer		Seat Material:		Buna-N / EPDM			
Body Material:	Ductile Iron		Disc Material:		Bronze		Shaft Material:		416 SS			
Size:	2"	2-1/2"	3"	4"	5"	6"	8"	10"	12"	14"		
Item Price:	64.00	83.00	99.00	167.00	231.00	294.00	486.00	829.00	1225.00	1734.00		
Item Weight - Lbs.:	6	7	10	13	18	20	32	42	70	95		
Size:	16"	18"	20"	24"	30"	36"	42"	48"				
Item Price:	2742.00	3567.00	4561.00	7953.00	P.O.A.	P.O.A.	P.O.A.	P.O.A.				
Item Weight - Lbs.:	117	165	275	440								

ITEM #:	BI126WDSSBB/EB										Operator: Bare	
M.A.W.P.:	200/150 psig at 150 F		End Connection:		Wafer		Seat Material:		Buna-N / EPDM			
Body Material:	Ductile Iron		Disc Material:		316 SS		Shaft Material:		316 SS			
Size:	2"	2-1/2"	3"	4"	5"	6"	8"	10"	12"	14"		
Item Price:	59.00	75.00	90.00	143.00	198.00	245.00	397.00	660.00	961.00	1382.00		
Item Weight - Lbs.:	6	7	10	13	18	20	32	42	70	95		
Size:	16"	18"	20"	24"	30"	36"	42"	48"				
Item Price:	2205.00	2823.00	3584.00	6280.00	P.O.A.	P.O.A.	P.O.A.	P.O.A.				
Item Weight - Lbs.:	117	165	275	440								

ITEM #:	BI126WDSSTB										Operator: Bare	
M.A.W.P.:	200 psig at 150 F		End Connection:		Wafer		Seat Material:		Teflon			
Body Material:	Ductile Iron		Disc Material:		316 SS		Shaft Material:		316 SS			
Size:	2"	2-1/2"	3"	4"	5"	6"	8"	10"	12"			
Item Price:	91.00	125.00	153.00	228.00	306.00	390.00	618.00	970.00	1519.00			
Item Weight - Lbs.:	6	7	10	13	18	20	32	42	70			

ITEM #:	BI126WDSSVB										Operator: Bare	
M.A.W.P.:	200 psig at 150 F		End Connection:		Wafer		Seat Material:		Viton			
Body Material:	Ductile Iron		Disc Material:		316 SS		Shaft Material:		316 SS			
Size:	2"	2-1/2"	3"	4"	5"	6"	8"	10"	12"	14"		
Item Price:	116.00	142.00	174.00	237.00	372.00	444.00	649.00	1080.00	1546.00	2103.00		
Item Weight - Lbs.:	6	7	10	13	18	20	32	42	70	95		
Size:	16"	18"	20"	24"	30"	36"	42"	48"				
Item Price:	3417.00	4310.00	5188.00	9422.00	P.O.A.	P.O.A.	P.O.A.	P.O.A.				
Item Weight - Lbs.:	195	230	396	610								

ITEM #:	BI126LDBB/EB										Operator:		Bare	
M.A.W.P.:	200/150 psig at 150 F				End Connection:		Lug		Seat Material:		Buna-N / EPDM			
Body Material:	Ductile Iron				Disc Material:		Ductile Iron		Shaft Material:		416 SS			
Size:	2"	2-1/2"	3"	4"	5"	6"	8"	10"	12"	14"				
Item Price:	70.00	84.00	94.00	132.00	175.00	206.00	316.00	468.00	670.00	864.00				
Item Weight - Lbs.:	7	8	14	26	28	31	49	72	105	155				
Size:	16"	18"	20"	24"	30"	36"	42"	48"						
Item Price:	1546.00	1980.00	2559.00	3887.00	P.O.A.	P.O.A.	P.O.A.	P.O.A.						
Item Weight - Lbs.:	195	230	396	610										

ITEM #:	BI126LDBB/EB										Operator:		Bare	
M.A.W.P.:	200/150 psig at 150 F				End Connection:		Lug		Seat Material:		Buna-N / EPDM			
Body Material:	Ductile Iron				Disc Material:		Bronze		Shaft Material:		416 SS			
Size:	2"	2-1/2"	3"	4"	5"	6"	8"	10"	12"	14"				
Item Price:	82.00	106.00	119.00	199.00	268.00	334.00	543.00	927.00	1377.00	1948.00				
Item Weight - Lbs.:	7	8	14	26	28	31	49	72	105	155				
Size:	16"	18"	20"	24"	30"	36"	42"	48"						
Item Price:	3052.00	3981.00	5290.00	8529.00	P.O.A.	P.O.A.	P.O.A.	P.O.A.						
Item Weight - Lbs.:	195	230	396	610										

ITEM #:	BI126LDSSB/EB										Operator:		Bare	
M.A.W.P.:	200/150 psig at 150 F				End Connection:		Lug		Seat Material:		Buna-N / EPDM			
Body Material:	Ductile Iron				Disc Material:		316 SS		Shaft Material:		316 SS			
Size:	2"	2-1/2"	3"	4"	5"	6"	8"	10"	12"	14"				
Item Price:	81.00	96.00	112.00	175.00	236.00	293.00	470.00	1031.00	1223.00	1628.00				
Item Weight - Lbs.:	7	8	14	26	28	31	49	72	105	155				
Size:	16"	18"	20"	24"	30"	36"	42"	48"						
Item Price:	2532.00	3301.00	4340.00	6879.00	P.O.A.	P.O.A.	P.O.A.	P.O.A.						
Item Weight - Lbs.:	195	230	396	610										

ITEM #:	BI126LDSSTB										Operator:		Bare	
M.A.W.P.:	200 psig at 150 F				End Connection:		Lug		Seat Material:		Teflon			
Body Material:	Ductile Iron				Disc Material:		316 SS		Shaft Material:		316 SS			
Size:	2"	2-1/2"	3"	4"	5"	6"	8"	10"	12"					
Item Price:	117.00	150.00	180.00	266.00	353.00	448.00	704.00	1415.00	1713.00					
Item Weight - Lbs.:	6	7	10	13	18	20	32	42	70					

ITEM #:	BI126LDSSVB										Operator:		Bare	
M.A.W.P.:	200 psig at 150 F				End Connection:		Lug		Seat Material:		Viton			
Body Material:	Ductile Iron				Disc Material:		316 SS		Shaft Material:		316 SS			
Size:	2"	2-1/2"	3"	4"	5"	6"	8"	10"	12"	14"				
Item Price:	138.00	163.00	196.00	305.00	410.00	493.00	721.00	1451.00	1708.00	2260.00				
Item Weight - Lbs.:	6	7	10	13	18	20	32	42	70	95				
Size:	16"	18"	20"	24"	30"	36"	42"	48"						
Item Price:	3743.00	4789.00	5944.00	10022.00	P.O.A.	P.O.A.	P.O.A.	P.O.A.						
Item Weight - Lbs.:	195	230	396	610										

OPERATOR OPTIONS for Resilient Seated Butterfly Valves

ITEM:	Price Adders for Lever Handle c/w 10 Position Plate									
Size:	2"	2-1/2"	3"	4"	5"	6"	8"	10"	12"	
Item Price:	11.00	11.00	11.00	11.00	11.00	11.00	12.00	24.00	24.00	
Item Weight - Lbs.:	2	2	2	2	2	2	4	4	4	

ITEM:	Price Adders for Manual Gear c/w Wheel									
Size:	2"	2-1/2"	3"	4"	5"	6"	8"	10"	12"	14"
Item Price:	56.00	56.00	56.00	56.00	56.00	56.00	107.00	107.00	121.00	121.00
Item Weight - Lbs.:	10	10	10	10	10	10	28	28	33	33
Size:	16"	18"	20"	24"	30"	36"	42"	48"		
Item Price:	405.00	405.00	405.00	714.00	P.O.A.	P.O.A.	P.O.A.	P.O.A.		
Item Weight - Lbs.:	71	71	80	80						

High Performance Butterfly Valves

MODEL	HB150WSSRL/G										Operator:	2" THRU 6" C/W LEVER; 8" & UP WITH GEAR									
M.A.W.P.	285 psig at 100 F				End Connection:				Wafer				Seat:				RTFE				
Body:	Carbon Steel (WCB)				Disc:				316 SS				Shaft:				316 SS				
Size	2"	2-1/2"	3"	4"	5"	6"	8"	10"	12"	14"											
Item Price:	824.00	995.00	1076.00	1334.00	1706.00	2112.00	3404.00	4196.00	5916.00	7228.00											
Unit Weight - Lbs	14	20	26	44	50	57	70	112	158	187											
Size	16"	18"	20"	24"																	
Item Price:	8902.00	11217.00	14080.00	19807.00																	
Unit Weight - Lbs	255	352	455	704																	

MODEL	HB150LSSRL/G										Operator:	2" THRU 6" C/W LEVER; 8" & UP WITH GEAR									
M.A.W.P.	285 psig at 100 F				End Connection:				Lug				Seat:				RTFE				
Body:	Carbon Steel (WCB)				Disc:				316 SS				Shaft:				316 SS				
Size	2"	2-1/2"	3"	4"	5"	6"	8"	10"	12"	14"											
Item Price:	915.00	1029.00	1137.00	1647.00	1841.00	2207.00	3569.00	4484.00	6559.00	7866.00											
Unit Weight - Lbs	15	25	35	48	56	64	80	128	191	216											
Size	16"	18"	20"	24"																	
Item Price:	10032.00	12503.00	18468.00	21824.00																	
Unit Weight - Lbs	315	462	572	880																	

MODEL	HB150WSSSRL/G										Operator:	2" THRU 6" C/W LEVER; 8" & UP WITH GEAR									
M.A.W.P.	275 psig at 100 F				End Connection:				Wafer				Seat:				RTFE				
Body:	316 SS (CF8M)				Disc:				316 SS				Shaft:				316 SS				
Size	2"	2-1/2"	3"	4"	5"	6"	8"	10"	12"	14"											
Item Price:	960.00	1252.00	1354.00	1785.00	2247.00	2863.00	4522.00	5510.00	7791.00	9666.00											
Unit Weight - Lbs	14	20	26	44	50	57	70	112	158	187											
Size	16"	18"	20"	24"																	
Item Price:	12070.00	15143.00	18494.00	25838.00																	
Unit Weight - Lbs	255	352	455	704																	

MODEL	HB150LSSSRL/G										Operator:	2" THRU 6" C/W LEVER; 8" & UP WITH GEAR									
M.A.W.P.	275 psig at 100 F				End Connection:				Lug				Seat:				RTFE				
Body:	316 SS (CF8M)				Disc:				316 SS				Shaft:				316 SS				
Size	2"	2-1/2"	3"	4"	5"	6"	8"	10"	12"	14"											
Item Price:	1144.00	1374.00	1503.00	2105.00	2579.00	3066.00	4874.00	6194.00	9294.00	11500.00											
Unit Weight - Lbs	15	25	35	48	56	64	80	128	191	216											
Size	16"	18"	20"	24"																	
Item Price:	15089.00	18615.00	24065.00	31524.00																	
Unit Weight - Lbs	315	462	572	880																	

MODEL	HB300WSSRL/G										Operator:	2" THRU 6" C/W LEVER; 8" & UP WITH GEAR									
M.A.W.P.	740 psig at 100 F				End Connection:				Wafer				Seat:				RTFE				
Body:	Carbon Steel (WCB)				Disc:				316 SS				Shaft:				316 SS				
Size	2"	2-1/2"	3"	4"	5"	6"	8"	10"	12"	14"											
Item Price:	869.00	968.00	1158.00	1435.00	1828.00	2153.00	3478.00	4366.00	6397.00	7690.00											
Unit Weight - Lbs	15	20	26	44	52	59	99	148	187	231											
Size	16"	18"	20"	24"																	
Item Price:	9930.00	12178.00	16063.00	21709.00																	
Unit Weight - Lbs	396	594	704	902																	

MODEL	HB300LSSSSL/G										Operator:	2" THRU 6" C/W LEVER; 8" & UP WITH GEAR													
M.A.W.P.	740 psig at 100 F					End Connection:					Lug					Seat:					RTFE				
Body:	Carbon Steel (WCB)					Disc:					316 SS					Shaft:					316 SS				
Size	2"		2-1/2"		3"		4"		5"		6"		8"		10"		12"		14"						
Item Price:	1007.00	1117.00	1239.00	1739.00	2004.00	2410.00	3838.00	5199.00	7067.00	9416.00															
Unit Weight - Lbs	16	26	35	48	65	81	139	227	246	484															
Size	16"		18"		20"		24"																		
Item Price:	11711.00	15447.00	18866.00	26326.00																					
Unit Weight - Lbs	616	792	990	1540																					

MODEL	HB300WSSSSL/G										Operator:	2" THRU 6" C/W LEVER; 8" & UP WITH GEAR													
M.A.W.P.	720 psig at 100 F					End Connection:					Wafer					Seat:					RTFE				
Body:	316 SS (CF8M)					Disc:					316 SS					Shaft:					316 SS				
Size	2"		2-1/2"		3"		4"		5"		6"		8"		10"		12"		14"						
Item Price:	1098.00	1354.00	1598.00	2038.00	2505.00	2985.00	4826.00	6025.00	9044.00	11068.00															
Unit Weight - Lbs	15	20	26	44	52	59	99	148	187	231															
Size	16"		18"		20"		24"																		
Item Price:	14114.00	17735.00	24132.00	30739.00																					
Unit Weight - Lbs	396	594	704	902																					

MODEL	HB300LSSSSL/G										Operator:	2" THRU 6" C/W LEVER; 8" & UP WITH GEAR													
M.A.W.P.	720 psig at 100 F					End Connection:					Lug					Seat:					RTFE				
Body:	316 SS (CF8M)					Disc:					316 SS					Shaft:					316 SS				
Size	2"		2-1/2"		3"		4"		5"		6"		8"		10"		12"		14"						
Item Price:	1327.00	1598.00	1767.00	2342.00	2972.00	3567.00	5558.00	7947.00	10472.00	15880.00															
Unit Weight - Lbs	16	26	35	48	65	81	139	227	246	484															
Size	16"		18"		20"		24"																		
Item Price:	18927.00	26935.00	31870.00	43777.00																					
Unit Weight - Lbs	616	792	990	1540																					

MODEL	HB600WSSSSL/G										Operator:	2" THRU 6" C/W LEVER; 8" & UP WITH GEAR													
M.A.W.P.	1480 psig at 100F					End Connection:					Wafer					Seat:					RTFE				
Body:	Carbon Steel (WCB)					Disc:					316SS					Shaft:					316SS				
Size	2"		2-1/2"		3"		4"		5"		6"		8"		10"		12"		14"						
Item Price:	1758.00	2176.00	2636.00	3269.00	3473.00	4059.00	5524.00	8746.00	12794.00	15191.00															
Unit Weight - Lbs			64	84	121	165	299	440	649																
Size	16"		18"		20"		24"																		
Item Price:	19860.00	24021.00	31680.00	42811.00																					
Unit Weight - Lbs																									

MODEL	HB600LSSSSL/G										Operator:	2" THRU 6" C/W LEVER; 8" & UP WITH GEAR													
M.A.W.P.	1480 psig at 100F					End Connection:					Lug					Seat:					RTFE				
Body:	Carbon Steel (WCB)					Disc:					316SS					Shaft:					316SS				
Size	2"		2-1/2"		3"		4"		5"		6"		8"		10"		12"		14"						
Item Price:	1925.00	2553.00	3055.00	3264.00	3808.00	4562.00	6403.00	11383.00	13559.00	17911.00															
Unit Weight - Lbs			85	112	162	219	399	587	865																
Size	16"		18"		20"		24"																		
Item Price:	21887.00	28290.00	3492.00	47038.00																					
Unit Weight - Lbs																									

MODEL	HB600WSSSSL/G										Operator:	2" THRU 6" C/W LEVER; 8" & UP WITH GEAR													
M.A.W.P.	1440 psig at 100F					End Connection:					Wafer					Seat:					RTFE				
Body:	316SS (CF8M)					Disc:					316SS					Shaft:					316SS				
Size	2"		2-1/2"		3"		4"		5"		6"		8"		10"		12"		14"						
Item Price:	2218.00	2595.00	2888.00	3976.00	4813.00	5566.00	8286.00	12095.00	17869.00	21845.00															
Unit Weight - Lbs			64	84	121	165	299	440	649																
Size	16"		18"		20"		24"																		
Item Price:	27830.00	34986.00	47624.00	60672.00																					
Unit Weight - Lbs																									

MODEL	HB600LSSSSRL/G									
M.A.W.P.	1440 psig at 100F				Operator:		2" THRU 6" C/W LEVER; 8" & UP WITH GEAR			
Body:	316SS (CF8M)			End Connection:	Lug	Seat:	RTFE			
Disc:	316SS									
Shaft:	316SS									
Size	2"	2-1/2"	3"	4"	5"	6"	8"	10"	12"	14"
Item Price:	2595.00	2971.00	3515.00	4603.00	5357.00	6194.00	9080.00	17116.00	20380.00	31303.00
Unit Weight - Lbs			85	112	162	219	399	587	865	
Size	16"	18"	20"	24"						
Item Price:	34023.00	45406.00	55366.00	72817.00						
Unit Weight - Lbs										

Operator Options for High Performance Butterfly Valve

ITEM:	Price Adders: Manual Gear, c/w Handwheel									
Size:	2"	2-1/2"	3"	4"	5"	6"				
Item Price:	230.00	230.00	230.00	230.00	230.00	230.00				
Item Weight - Lbs.:	1.5	2	2	2	3	4				

Replacement Parts - High Performance Butterfly Valve

ITEM:	Replacement RTFE Seats									
Size	2"	2-1/2"	3"	4"	5"	6"	8"	10"	12"	14"
Item Price:	87.00	112.00	112.00	182.00	210.00	250.00	400.00	520.00	870.00	936.00
Size	16"	18"	20"	24"						
Item Price:	1267.00	2101.00	2458.00	3535.00						
ITEM:	Replacement Packing									
Size	2"	2-1/2"	3"	4"	5"	6"	8"	10"	12"	14"
Item Price:	52.00	52.00	52.00	54.00	55.00	57.00	61.00	69.00	77.00	114.00
Size	16"	18"	20"	24"						
Item Price:	135.00	147.00	303.00	338.00						
ITEM:	Replacement Gasket									
Size	2"	2-1/2"	3"	4"	5"	6"	8"	10"	12"	14"
Item Price:	8.00	8.00	8.00	10.00	10.00	10.00	13.00	16.00	18.00	18.00
Size	16"	18"	20"	24"						
Item Price:	21.00	21.00	29.00	37.00						

Flanged Triple Duty Valves

Note: Bronze disc model TD125FIBE has been discontinued

ITEM #:	TD125FIDE									
M.A.W.P.:	200 psig at 150 F			End Connection:	125 Lb. FF Flanged	Disc Material:	C.I. Nickel Plated			
Body Material:	Cast Iron			Guide:	Cast Iron	O-Ring:	EPDM			
Size:	2"	2 1/2"	3"	4"	5"	6"	8"	10"	12"	14"
Item Price:	316.00	378.00	469.00	1008.00	1350.00	1705.00	2910.00	4540.00	7235.00	8720.00
Item Weight - Lbs.:	34	40	50	100	155	200	350	480	660	790

N.P.T. and Flanged Drip Pan Elbows

ITEM #:	D125PE									
M.A.W.P.:	200 psig at 150 F			End Connection:	3/4" - 4", N.P.T.	6" & 8", 125 Lb. FF Flanged				
Body Material:	Cast Iron									
Size:	3/4"	1"	1 1/4"	1 1/2"	2"	2 1/2"	3"	4"	6"	8"
Item Price:	27.45	27.45	74.85	74.85	84.30	117.00	180.00	220.00	560.00	1045.00
Item Weight - Lbs.:	2	2	7.5	7.5	8.5	12	19	25	105	202

Air Vents

ITEM #:	AR150 (AV250)									
M.A.W.P.:	150 psig at 250 F	End Connection:				N.P.T.	Seat:		Viton	
Body Material:	Cast Iron	Reinforcement:					Other Wetted:		300 Series SS	
Size:	3/4"	1"	1 1/4"	1 1/2"	2"	2 1/2"	3"	4"	6"	8"
Item Price:	140.00									
Item Weight - Lbs.:	6									

Neoprene Connectors

ITEM #:	AUM (CTNT)										Extended Double Sphere					
M.A.W.P.:	150 psig at 200 F										End Connection:		N.P.T.	Style:		Twin
Elastomer:	Neoprene										Reinforcement:		Nylon Cloth	Union:		Zinc Plated C.I.
Size:	1/2"	3/4"	1"	1-1/4"	1-1/2"	2"	2-1/2"	3"								
Item Price:	32.00	32.00	42.00	51.00	60.00	74.00	P.O.A.	P.O.A.								
Item Weight - Lbs.:	1	2	3	4	5	6										

ITEM #:	ASM (CFNS)										Single Sphere					
M.A.W.P.:	200/100 psig at 200 F										End Connection:		Flanged	Style:		Single
Elastomer:	Neoprene										Reinforcement:		Synthetic	Flanges:		Zinc Plated C.S.
Size:	1-1/4"	1-1/2"	2"	2-1/2"	3"	4"	5"	6"	8"	10"						
Item Price:	40.00	45.00	60.00	80.00	100.00	130.00	180.00	230.00	335.00	495.00						
Item Weight - Lbs.:	5	6	8	12	14	18	23	26	40	56						
Size:	12"	14"	16"	18"	20"	24"										
Item Price:	675.00	850.00	1050.00	1370.00	1650.00	2280.00										
Item Weight - Lbs.:	85	99	128	134	155	155										

ITEM #:	ATM (CFNT)										Double Sphere					
M.A.W.P.:	200/100 psig at 200 F										End Connection:		Flanged	Style:		Twin
Elastomer:	Neoprene										Reinforcement:		Synthetic	Flanges:		Zinc Plated C.S.
Size:	1-1/2"	2"	2-1/2"	3"	4"	5"	6"	8"	10"	12"						
Item Price:	45.00	75.00	93.00	115.00	165.00	215.00	280.00	485.00	620.00	825.00						
Item Weight - Lbs.:	6	8	12	14	18	23	28	45	62	90						

Unibody Threaded End Ball Valves

ITEM #:	1RB20TCSCO Firesafe															
M.A.W.P.:	2000 psig at 100 F										End Connection:		N.P.T.	Operator:		Oval Latching
Body / Ball	Carbon (WCB)/316 SS										Type and Port:		1 pc Reduded Port	Seat Material:		Polycarbon
Size:	1/4"	3/8"	1/2"	3/4"	1"	1-1/4"	1-1/2"	2"								
Item Price:	60.00	60.00	60.00	66.20	87.00	124.00	165.00	215.00								
Item Weight - Lbs.:	1	1	1	1	2	3	4	5								

ITEM #:	1RB20TCSSCO Firesafe															
M.A.W.P.:	2000 psig at 100 F										End Connection:		N.P.T.	Operator:		Oval Latching
Body / Ball	316SS (CF8M)/316										Type and Port:		1 pc Reduded Port	Seat Material:		Polycarbon
Size:	1/4"	3/8"	1/2"	3/4"	1"	1-1/4"	1-1/2"	2"								
Item Price:	75.00	75.00	75.00	85.00	118.00	175.00	240.00	315.00								
Item Weight - Lbs.:	1	1	1	1	2	3	4	5								

Two Piece Threaded End Ball Valves

ITEM #: 2FB6TBBTN (NPT End)											
M.A.W.P.:	600 psig at 100 F			End Connection:	N.P.T.			Operator:	Lever (no latch)		
Body / Ball	Brass / Brass			Type and Port:	2 pc Full Port			Seat Material:	Teflon		
Size:	1/4"	3/8"	1/2"	3/4"	1"	1-1/4"	1-1/2"	2"	2-1/2"	3"	
Item Price:	9.00	9.00	15.00	21.00	29.00	49.00	68.00	102.00	210.00	270.00	
Item Weight - Lbs.:	1	1	1	1	1	2	2	3	6	10	
Size:	4"										
Item Price:	505.00										
Item Weight - Lbs.:	19										

ITEM #: 2FB6SBBTN (Sweat End)											
M.A.W.P.:	600 psig at 100 F			End Connection:	N.P.T.			Operator:	Lever (no latch)		
Body / Ball	Brass / Brass			Type and Port:	2 pc Full Port			Seat Material:	Teflon		
Size:	1/2"	3/4"	1"	1-1/4"	1-1/2"	2"	2-1/2"	3"	4"		
Item Price:	13.00	21.00	29.00	47.00	70.00	101.00	186.00	270.00	435.00		
Item Weight - Lbs.:	1	1	1	2	2	3	6	10	19		

ITEM #: 2FB10TSSTL											
M.A.W.P.:	1000 psig at 100 F			End Connection:	N.P.T.			Operator:	Latching Lever		
Body / Ball	316SS (CF8M)/316			Type and Port:	2 pc Full Port			Seat Material:	Teflon		
Size:	1/4"	3/8"	1/2"	3/4"	1"	1-1/4"	1-1/2"	2"	2-1/2"	3"	
Item Price:	22.00	22.00	22.00	29.00	47.00	69.00	95.00	128.00	295.00	485.00	
Item Weight - Lbs.:	1	1	1	1	2	2	4	6	13	17	

ITEM #: 2SB900TCSSL											
M.A.W.P.:	2220 psig at 100 F			End Connection:	N.P.T.			Operator:	Latching Lever		
Body / Ball	Carbon (WCB)/316 SS			Type and Port:	2 pc Standard Port			Seat Material:	Polycarbon		
Size:	1/4"	3/8"	1/2"	3/4"	1"	1-1/4"	1-1/2"	2"			
Item Price:	61.00	61.00	61.00	90.00	109.00	158.00	213.00	278.00			
Item Weight - Lbs.:	1	1	1	1	2	2	3	4			

ITEM #: 2SB900TSSRL											
M.A.W.P.:	2160 psig at 100 F			End Connection:	N.P.T.			Operator:	Latching Lever		
Body / Ball	316SS (CF8M)/316			Type and Port:	2 pc Standard Port			Seat Material:	RTFE		
Size:	1/4"	3/8"	1/2"	3/4"	1"	1-1/4"	1-1/2"	2"			
Item Price:	74.00	74.00	74.00	108.00	133.00	204.00	276.00	362.00			
Item Weight - Lbs.:	1	1	1	1	2	2	3	4			

Three Piece Threaded End Ball Valves

ITEM #: 3FB10TSSRL / 3FB10SWSSRL											
M.A.W.P.:	1000 psig at 100 F			End Connection:	N.P.T. / Socket Weld			Operator:	Latching Lever		
Body / Ball	316SS (CF8M)/316			Type and Port:	3 pc Full Port			Seat Material:	RTFE		
Size:	1/4"	3/8"	1/2"	3/4"	1"	1-1/4"	1-1/2"	2"	2-1/2"	3"	
Item Price:	52.00	52.00	65.00	89.00	125.00	185.00	265.00	380.00	710.00	1045.00	
Item Weight - Lbs.:	1	1	2	2	3	5	7	10	15	19	
Size:	4"										
Item Price:	2035.00										
Item Weight - Lbs.:	24										

ITEM #: 3SB20TCSSL / 3SB20SWCSCL											
M.A.W.P.:	2000 psig at 100 F			End Connection:	N.P.T.			Operator:	Latching Lever		
Body / Ball	Carbon (WCB)/316 SS			Type and Port:	3 pc Standard Port			Seat Material:	Polycarbon		
Size:	1/2"	3/4"	1"	1-1/4"	1-1/2"	2"					
Item Price:	112.00	137.00	197.00	327.00	345.00	515.00					
Item Weight - Lbs.:	2	3	4	6	8	11					

ITEM #:	3SB20TSSRL / 3SB20SWSSRL										
M.A.W.P.:	2000 psig at 100 F			End Connection:		N.P.T.		Operator:		Latching Lever	
Body / Ball	316SS (CF8M)/316			Type and Port:		3 pc Standard Port		Seat Material:		RTFE	
Size:	1/2"	3/4"	1"	1-1/4"	1-1/2"	2"					
Item Price:	94.00	115.00	164.00	273.00	287.00	427.00					
Item Weight - Lbs.:	2	3	4	6	8	11					

Split Body Flanged Ball Valves

ITEM #:	2FB150FCSC										
M.A.W.P.:	285 psig at 100 F			End Connection:		150 lb. RF Flg		Operator:		Lever / Gear	
Body / Ball	Carbon (WCB)/316 SS			Type and Port:		2 pc Split Body FP		Seat Material:		Polycarbon	
Size:	1/2"	3/4"	1"	1-1/2"	2"	2-1/2"	3"	4"	6"	8"	
Item Price:	138.00	173.00	215.00	380.00	450.00	810.00	1010.00	1545.00	3130.00	P.O.A.	
Item Weight - Lbs.:	4	5	7	14	20	32	42	70	155	250	
Size:	10"										
Item Price:	P.O.A.										
Item Weight - Lbs.:	350										

ITEM #:	2FB150FSSRL										
M.A.W.P.:	275 psig at 100 F			End Connection:		150 lb. RF Flg		Operator:		Lever / Gear	
Body / Ball	316SS (CF8M)/316			Type and Port:		2 pc Split Body FP		Seat Material:		RTFE	
Size:	1/2"	3/4"	1"	1-1/2"	2"	2-1/2"	3"	4"	6"	8"	
Item Price:	185.00	240.00	295.00	530.00	725.00	1260.00	1590.00	2240.00	5635.00	P.O.A.	
Item Weight - Lbs.:	4	5	7	14	20	32	42	70	155	250	
Size:	10"										
Item Price:	P.O.A.										
Item Weight - Lbs.:	350										

ITEM #:	2FB300FCSC										
M.A.W.P.:	740 psig at 100 F			End Connection:		300 lb. RF Flg		Operator:		Lever / Gear	
Body / Ball	Carbon (WCB)/316 SS			Type and Port:		2 pc Split Body FP		Seat Material:		Polycarbon	
Size:	1/2"	3/4"	1"	1-1/2"	2"	2-1/2"	3"	4"	6"	8"	
Item Price:	257.00	306.00	355.00	599.00	734.00	P.O.A.	1430.00	2249.00	4559.00	P.O.A.	
Item Weight - Lbs.:	5	8	11	20	25	32	45	70	155	250	

ITEM #:	2FB300FSSRL										
M.A.W.P.:	720 psig at 100 F			End Connection:		300 lb. RF Flg		Operator:		Lever / Gear	
Body / Ball	316SS (CF8M)/316			Type and Port:		2 pc Split Body FP		Seat Material:		RTFE	
Size:	1/2"	3/4"	1"	1-1/2"	2"	2-1/2"	3"	4"	6"	8"	
Item Price:	330.00	403.33	501.11	850.00	1033.33	P.O.A.	2267.78	3538.89	7113.33	25177.78	
Item Weight - Lbs.:	5	8	11	20	25	32	45	70	155	250	

SECTION 1 - GENERAL

- Standard Payment Terms: Net 30 days
- Outside North America: Telephone Wire Transfers before Shipping. Net 30 day terms may be granted subject to credit approval.
- Written quotations are valid for a period of thirty days after issue.
- The seller reserves the right to change the value of the quotation at any time in writing before an order is accepted.
- Verbal quotations are valid for 24 hours unless confirmed to the purchaser in writing.
- Item pricing, stenographic and clerical errors are subject to correction without notice. The Seller reserves the right to alter dimensions without notice. Apply for certified drawings.
- The products sold in this price book are not designed, sold or intended for personal, family or household purposes.

SECTION 2 - LIQUIDATION DAMAGES

- Purchase orders containing penalty charges for failing to meet delivery must be agreed to and accepted in writing by an authorized signing officer.
- Quoted delivery dates are determined by conditions on that date. The delivery dates are subject to change due to uncontrollable causes.
- Under no circumstances will the Seller be liable for any damages due to late delivery.

SECTION 3 - CUSTOM MANUFACTURED PRODUCTS

- Item dimensions may change without notice. Please inquire about certified drawing for approval.
- Custom fabricated orders cannot be cancelled after the order has been approved and released for manufacturing by the purchaser.
- The purchaser will be held liable for the full purchase amount if the order is cancelled.

SECTION 4 - SHIPPING TERMS AND METHODS

- Standard Shipment Terms: F.O.B. Shipping Point unless stated in writing by the Seller.
- Items will be shipped the best way as determined by Seller unless stated otherwise by the Purchaser. The Purchaser is liable for all shipping charges incurred unless stated in writing by the Seller.
- All shipments will be packaged in accordance to domestic requirements. Export/Special Requirement crating, IE. Government, is available at an extra cost.

SECTION 5 - RETURNS AND CLAIMS

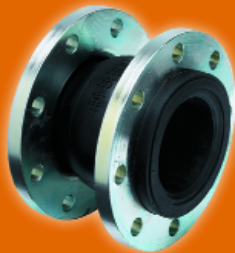
- All goods returned must be accompanied by a Return Authorization Number and reason issued in writing by the Seller otherwise the shipment will be refused by the Seller.
- Returns must be sent freight prepaid in order to be received at the Sellers dock.
- Items returned after a period of one year from ship date will receive zero dollar credit.
- A standard 25% re-stocking fee applies to returns of all cast product unless another amount is agreed on in writing by the Seller.
- A Zero credit will be applied to all custom fabricated products including screens and other manufactured and fitted products returned.
- Items returned due to defect will be examined by the seller before a credit amount is determined or the item will be repaired and returned to the Purchaser within 90 days of receipt by the Seller.
- The Purchaser will be held liable for any refinishing and handling charges of goods returned to the Seller.
- Claims must be submitted in writing to the Seller within 10 days of receiving the goods. If items are destroyed during shipment a claim is issued to the courier company and the damages must be noted on the freight bill before the Purchaser accepts the shipment.
- The Seller is not liable for any losses, costs, expenses or damages of any kind due to the product, its use, installation or replacement, labeling, instructions, information or technical data of any kind, description of product or use, sample or model, warnings or lack of any foregoing. No other warranties, written or oral, expressed or implied, including the warranties of fitness for a particular purpose and merchantability, are made or authorized. No affirmation of fact, promise, description of product of use or sample or model shall create any warranty from manufacturer, unless signed by the a signing officer of the company.

SECTION 6 - WARRANTY

- All items shall be free from defect in material and workmanship for a period of one year from date of shipment.

FOR STRAINERS, VALVES AND PIPELINE ACCESSORIES.

OUR KNOWLEDGE SETS US APART



Our Knowledge Sets us Apart.

Easy access to friendly help is always just a call or click away.

CANADA - 1145 Sutton Drive, Unit #3, Burlington, ON L7L 5Z8

Toll Free: 1.866.872.0072 Toll Free Fax: 1.866.872.0073 Local Calls: 905.335.8777 Local Fax: 905.335.0977

USA - PO Box 2989, Buffalo, NY 14240-2989

Visit us on the web at: www.islipflowcontrols.com