

Design Features

- Available in wafer body style. Suitable for installation between FF flanges only.
- May be installed between ANSI Class 125/250 and 150/300 flanges. (Sizes 8" and smaller only)
- Available with aluminum bronze or 316 SS trim.
- Standard metal to metal seating. Optional resilient seats.
- Body meets ASME B16.1
- Testing is performed in accordance with API 598.

Parts List and Standard Materials

Part	Description	Specifications
1	Body	A126-B Cast Iron
2	Plug	B148 C954 Aluminum Bronze A351-CF8M 316 SS
3	Seat ²	B148 C954 Aluminum Bronze A351-CF8M 316 SS
4	Spring ¹	Type 316 SS
5	Bushing ¹	B148 C954 Aluminum Bronze A351-CF8M 316 SS
6	Set Screw	300 Series Stainless Steel

Upper Pressure Limits (Non-Shock)

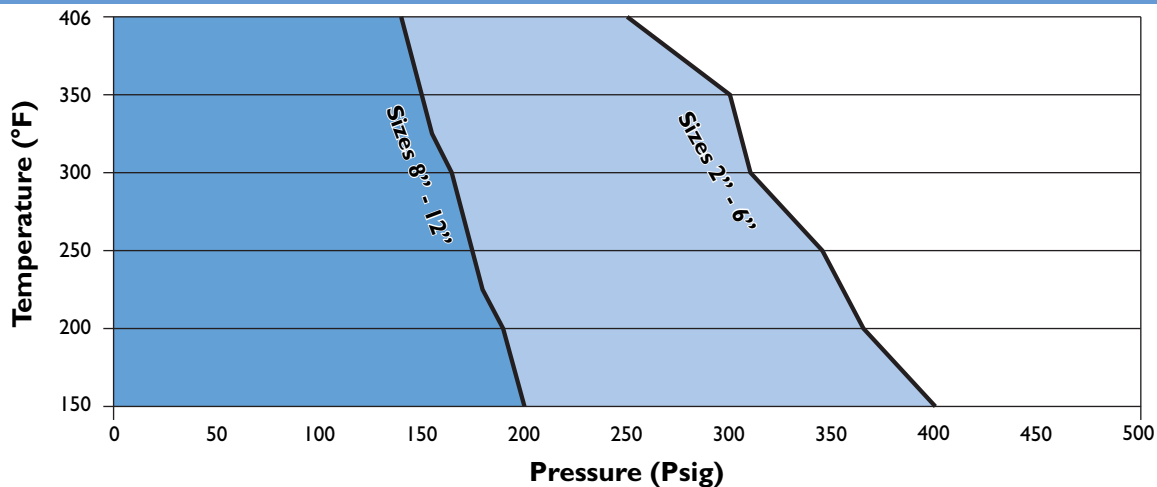
Valve Size - in. (mm)	M.A.W.P. - psig (Bars)
2" - 6" (50 - 150mm)	400 (27.58)
8" - 12" (200 - 300mm)	200 (13.79)

Lower Temperature Limits

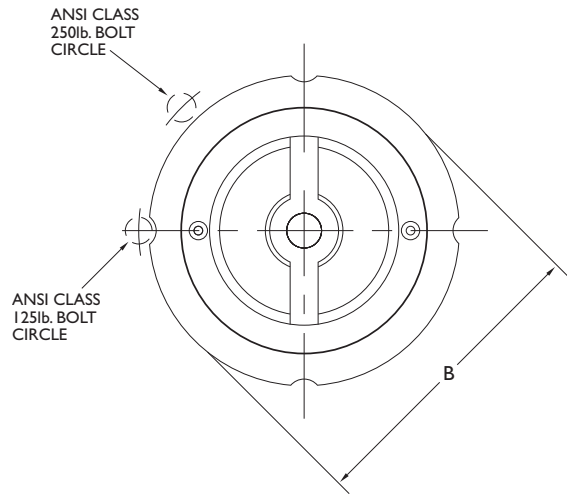
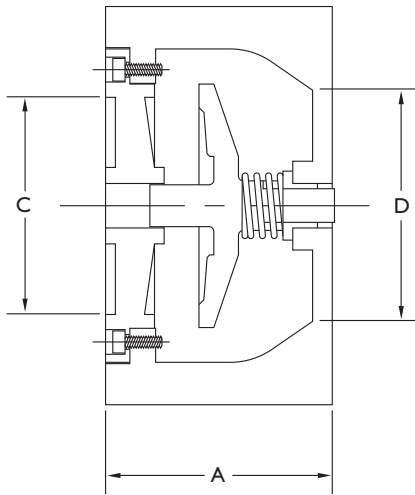
Body/Seat Material	Lower Limit °F (°C)
A126-B	-20° (-28.9°)
Buna-N, EPDM, Viton	-13° (-25°)

- Notes:**
1. Materials of equivalent strength may be substituted at manufacturer's option.
 2. Resilient seats are available. Contact factory.

Pressure Temperature Chart (In Accordance with ASME B16.1, ASME B16.4, A126-B)



- Notes:**
1. Cast Iron Valves are recommended for liquid service only.



Dimensional Data (Class 125/250)					Stud Selection						
Size ¹ in. (mm)	A in. (mm)	B in. (mm)	C ² in. (mm)	D in. (mm)	Qty. 125lb.	Qty. 250lb.	Dia. 125lb. in. (mm)	Dia. 250lb. in. (mm)	Length in. (mm)	Weight lb. (kg)	Cv
2 (50)	2.63 (67)	4.25 (108)	2.00 (51)	2.38 (60)	4	8	0.63 (16)	0.63 (16)	6.00 (152)	5 (2.3)	57
2.5 (65)	2.88 (73)	5.00 (127)	2.75 (70)	2.88 (60)	4	8	0.63 (16)	0.75 (19)	6.75 (171)	8 (3.6)	87
3 (80)	3.13 (80)	5.75 (146)	3.25 (83)	3.50 (89)	4	8	0.63 (16)	0.75 (19)	7.25 (184)	10 (4.5)	127
4 (100)	4.00 (102)	7.00 (178)	4.00 (102)	4.50 (114)	8	8	0.63 (16)	0.75 (19)	7.75 (197)	17 (7.7)	228
5 (125)	4.75 (121)	8.38 (213)	5.00 (127)	5.50 (140)	8	8	0.75 (19)	0.75 (19)	9.00 (229)	27 (12.3)	357
6 (150)	5.50 (140)	9.75 (248)	6.25 (159)	6.63 (168)	8	12	0.75 (19)	0.75 (19)	10.50 (267)	40 (18.2)	432
8 (200)	6.50 (165)	12.00 (305)	8.38 (213)	8.63 (219)	8	12	0.75 (19)	0.88 (22)	12.25 (311)	90 (40.9)	768
10 (250)	8.25 (210)	16.00 (406)	10.00 (254)	10.38 (264)	12	-	0.88 (22)	-	14.50 (368)	160 (72.6)	1240
12 (300)	11.25 (286)	19.00 (483)	11.75 (298)	12.50 (318)	24	-	0.88 (22)	-	6.50 (165)	340 (154.4)	1740

- Notes:**
1. 12" valves are supplied in lug body style.
 2. Sizes 2" thru 8" can be installed between both ANSI Class 125lb. and ANSI Class 250lb. flanges.
 3. Sizes 10" and larger can only be installed between ANSI Class 125lb. flanges.
 4. Full face gaskets are recommended for installation.
 5. Soft seats are available. Please consult factory.

- General:**
1. For pressure loss information please see page 33.
 2. For ordering information please see page 38.
 3. Dimensions are subject to change. Contact factory for certified prints when required.