

Design Features:

- Standard Sizes from 2" - 24". Larger sizes available upon request.
- Available with RF or RTJ flanged (ASME B16.5) or Buttweld (ASME B16.9) end connections.
- Standard thru bolt cover design.
- Three flow configurations are available.
- 304 SS perforated screens are standard.
- Upstream and downstream screen supports allow for bi-directional flow ¹.
- May be installed in horizontal or vertical pipelines.
- All welders are qualified to ASME Section IX.
- Strainers designed to meet the requirements of ASME B31.1, ASME B31.3 and/or ASME Section VIII, Div. 1.
- Drains, vents, differentials and special covers are optional.

Notes: 1. This requirement must be specified for strainer screens requiring mesh lining.

Parts List and Standard Materials

Part	Carbon Steel	Low Temp. Carbon Steel (-50°F)	Stainless Steel ¹
Body	A234-WPB	A420-WPL6	A403-WVP
Flanges	A105	A350-LF2	A182
Screen ²	304 SS	304 SS	304 SS
Internal support ribs:	Carbon Steel	304 SS	304 SS
Coupling/threadolet	A105	A350-LF2	A182
Plug ³	A105	A350-LF2	A182
Gasket ²	304 SS Spiral Wound	304 SS Spiral Wound	304 SS Spiral Wound
Stud	A193-B7	A193-B7	A193-B8-1
Nut	A194-2H	A194-2H	A194-8

Notes: 1. 304SS strainers use 304 grade material. 316SS strainers use 316 grade material. Dual rated material may be used.

2. Recommended Spares.

3. When required and when used.

4. NACE MR01-75 qualification available upon request. Material specifications will change.

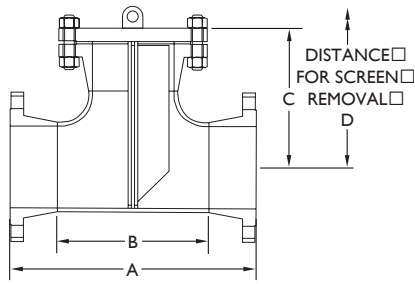
5. Also available in other alloys.

Upper Pressure Limits (Non-Shock) and Lower Temperature Limits (Unless otherwise specified)

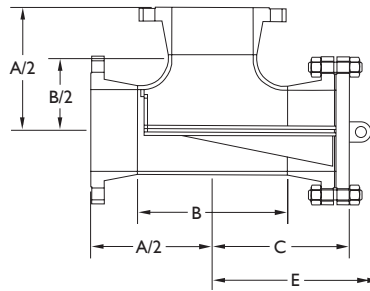
IFC Model (RF Flanged)	Body Material	Maximum Design Pressure – at 100°F – psig (Bars) ¹	Lower Temperature Limit – M.D.M.T. – °F (°C)
T150FSBW	Carbon Steel	285 (19.65)	-20 (-28.9)
T150FLCBW	Low Temp. Carbon Steel	285 (19.65)	-50 (-45.6)
T150FSS4BW / T150FSS6BW	304 / 316 SS	275 (18.96)	-20 (-28.9) Optional -425 (-253.9)
T150FSS4LBW / T150FSS6LBW	304L / 316L SS	230 (15.86)	-20 (-28.9) Optional -425 (-253.9)
T300FSBW	Carbon Steel	740 (51.02)	-20 (-28.9)
T300FLCBW	Low Temp. Carbon Steel	740 (51.02)	-50 (-45.6)
T300FSS4BW / T300FSS6BW	304 / 316 SS	720 (49.64)	-20 (-28.9) Optional -425 (-253.9)
T300FSS4LBW / T300FSS6LBW	304L / 316L SS	600 (41.37)	-20 (-28.9) Optional -425 (-253.9)
T600FSBW	Carbon Steel	1480 (102.04)	-20 (-28.9)
T600FLCBW	Low Temp. Carbon Steel	1480 (102.04)	-50 (-45.6)
T600FSS4BW / T600FSS6BW	304 / 316 SS	1440 (99.28)	-20 (-28.9) Optional -425 (-253.9)
T600SS4LBW / T600FSS6LBW	304L / 316L SS	1200 (82.74)	-20 (-28.9) Optional -425 (-253.9)

Notes: 1. All strainers will be designed to the maximum design pressure at 100°F unless an alternative design pressure / temperature combination is specified.

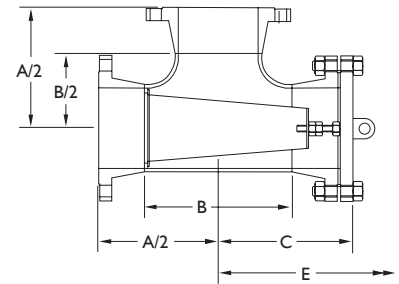
2. Lower and higher M.D.M.T.s are available upon request.



STYLE 1



STYLE 2



STYLE 3

Standard Screens

Size Range	Opening	Gauge Thickness
2" - 8" (50mm - 200mm)	0.125 in. (3.2mm)	22
10" - 12" (250mm - 300mm)	0.125 in. (3.2mm)	16
14" - 24" (350mm - 600mm)	0.188 in. (4.8mm)	11

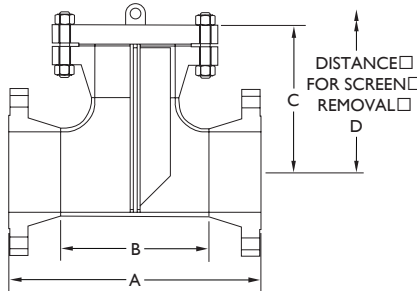
Dimensional Data

Size in. (mm)	A in. (mm)	B in. (mm)	C in. (mm)	D in. (mm)	E in. (mm)	Weight Lb. (kg.)		
						Cover	Unit Flanged	Buttweld
2"	10.00	5.00	5.75	11.00	12.50	5	28	16
50	254	127	146	279	318	2	13	7
3"	12.25	6.75	7.06	13.75	15.25	9	52	32
80	311	172	179	349	387	4	24	15
4"	14.25	8.25	8.06	16.25	18.38	17	79	49
100	362	210	205	413	467	8	36	22
5"	16.75	9.75	9.31	19.25	21.63	20	105	67
125	425	248	237	489	549	9	8	30
6"	18.25	11.25	10.13	21.25	23.68	26	140	92
150	464	286	257	540	606	12	64	42
8"	22.00	14.00	12.13	26.00	29.00	45	230	152
200	559	356	308	660	737	20	104	69
10"	25.00	17.00	13.69	30.00	33.50	70	325	221
250	635	432	348	762	851	32	148	100
12"	29.00	20.00	15.75	35.00	39.00	110	500	340
300	737	508	400	889	991	50	227	154
14"	32.00	22.00	17.38	39.00	43.00	140	710	490
350	813	559	441	991	1092	64	322	222
16"	34.00	24.00	18.44	42.00	46.00	180	860	580
400	864	610	468	1067	1168	82	390	263
18"	38.00	27.00	20.56	47.00	51.50	220	1025	725
450	965	686	522	1194	1308	100	465	329
20"	41.36	30.00	22.38	51.38	56.38	285	1350	990
500	1051	762	568	1305	1432	129	613	449
24"	46.00	34.00	24.88	58.00	63.00	430	2100	1580
600	1168	864	632	1473	1600	195	953	717

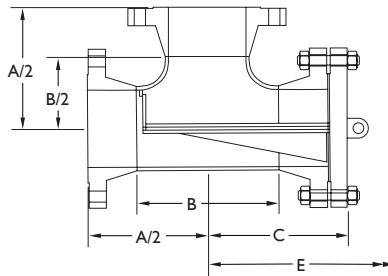
- Notes:**
1. Drains and differentials are optional.
 2. Cover lifting lug standard on sizes 10" and larger.

- General:**
1. For further optional features see pages 21-22.
 2. Other perforations and screen materials available. Please see page 24.

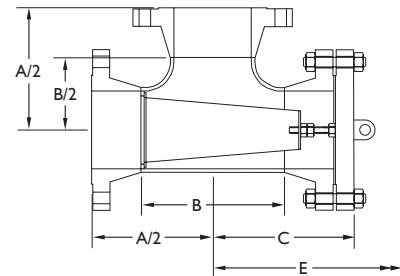
3. For pressure loss information see page 25.
4. For ordering information please see page 38.
5. Dimensions shown are subject to change. Contact factory for certified prints when required.



STYLE 1



STYLE 2



STYLE 3

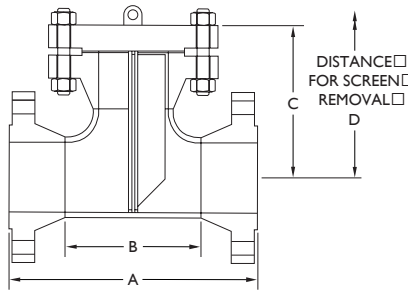
Standard Screens

Size Range	Opening	Gauge Thickness
2" - 8" (50mm - 200mm)	0.125 in. (3.2mm)	22
10" - 12" (250mm - 300mm)	0.125 in. (3.2mm)	16
14" - 24" (350mm - 600mm)	0.188 in. (4.8mm)	11

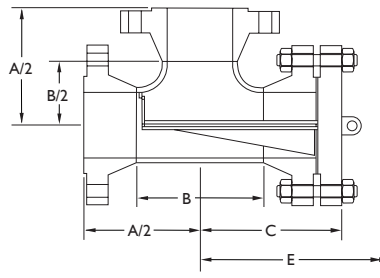
Dimensional Data

Size in. (mm)	A in. (mm)	B in. (mm)	C in. (mm)	D in. (mm)	E in. (mm)	Weight Lb. (kg.)		
						Cover	Unit Flanged	Buttweld
2"	10.50	5.00	6.13	11.50	13.00	8	42	24
50	267	127	156	292	330	4	19	11
3"	13.00	6.75	7.63	14.50	16.00	16	72	42
80	330	172	194	368	406	7	33	19
4"	15.00	8.25	8.75	17.00	19.13	27	125	75
100	381	210	222	432	486	12	57	34
5"	17.50	9.75	10.13	20.00	22.38	35	160	96
125	445	248	257	508	568	16	73	44
6"	19.00	11.25	10.94	22.00	24.63	50	225	141
150	483	286	278	559	625	23	102	62
8"	22.75	14.00	13.00	26.75	29.75	81	350	216
200	578	356	330	679	756	37	159	98
10"	26.25	17.00	15.00	31.25	34.75	124	495	313
250	667	432	381	794	883	56	225	142
12"	30.25	20.00	17.13	36.25	40.25	185	765	485
300	768	508	435	921	1022	84	347	220
14"	33.25	22.00	18.75	40.25	44.25	250	1025	665
350	845	559	476	1022	1124	114	465	302
16"	35.50	24.00	20.00	43.50	47.50	295	1320	820
400	902	610	508	1105	1207	134	599	372
18"	39.50	27.00	22.13	48.50	53.00	395	1700	1060
450	1003	686	562	1232	1346	179	772	481
20"	42.75	30.00	23.88	52.75	57.75	505	2250	1450
500	1086	762	606	1346	1513	229	1022	658
24"	60.25	34.00	26.38	64.25	70.25	790	3340	2240
600	1524	864	670	1632	1832	359	1544	1017

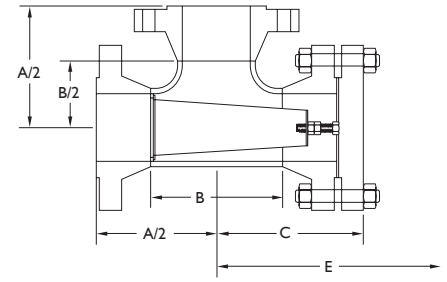
Notes: 1. Drains and differentials are optional.
2. Cover lifting lug standard on sizes 8" and larger.



STYLE 1



STYLE 2



STYLE 3

Standard Screens

Size Range	Opening	Gauge Thickness
2" - 8" (50mm - 200mm)	0.125 in. (3.2mm)	22
10" - 12" (250mm - 300mm)	0.125 in. (3.2mm)	16
14" - 24" (350mm - 600mm)	0.188 in. (4.8mm)	11

Dimensional Data

Size in. (mm)	A in. (mm)	B in. (mm)	C in. (mm)	D in. (mm)	E in. (mm)	Weight Lb. (kg.) Unit		
						Cover	Flanged	Buttweld
2"	11.25	5.00	6.88	12.25	13.75	10	52	28
50	286	127	175	311	349	5	24	13
3"	13.75	6.75	8.38	15.25	16.75	20	100	54
80	349	172	213	387	425	9	45	25
4"	16.75	8.25	10.13	18.75	20.88	41	190	106
100	425	210	257	476	530	19	86	48
5"	19.25	9.75	11.63	21.75	24.13	68	295	159
125	489	248	295	552	613	31	134	72
6"	21.00	11.25	12.63	24.00	25.63	86	365	203
150	533	286	321	610	676	39	166	92
8"	25.00	14.00	14.94	29.00	32.00	140	580	340
200	635	356	379	737	813	64	263	154
10"	29.50	17.00	17.50	34.50	38.00	230	900	520
250	749	432	445	876	965	104	409	236
12"	32.75	20.00	19.25	38.75	42.75	295	1150	700
300	832	508	489	984	1086	134	522	318
14"	35.50	22.00	20.75	42.50	46.50	355	1480	920
350	902	559	527	1080	1181	161	672	418
16"	38.50	24.00	22.50	46.50	50.50	495	1950	1170
400	978	610	572	1181	1283	225	885	531
18"	42.00	27.00	24.50	51.00	55.50	630	2450	1500
450	1067	686	622	1295	1410	286	1112	681
20"	45.50	30.00	26.50	55.50	60.50	810	3150	1970
500	1156	762	673	1410	1537	368	1430	894
24"	50.50	34.00	29.50	62.50	67.50	1250	4600	2940
600	1283	864	749	1588	1715	568	2088	1335

Notes: 1. Drains and differentials are optional.

2. Cover lifting lug standard on sizes 6" and larger.

General:

1. For further optional features see pages 21-22.
2. Other perforations and screen materials available. Please see page 24.

3. For pressure loss information see page 25.

4. For ordering information please see page 38.

5. Dimensions shown are subject to change.

Contact factory for certified prints when required.